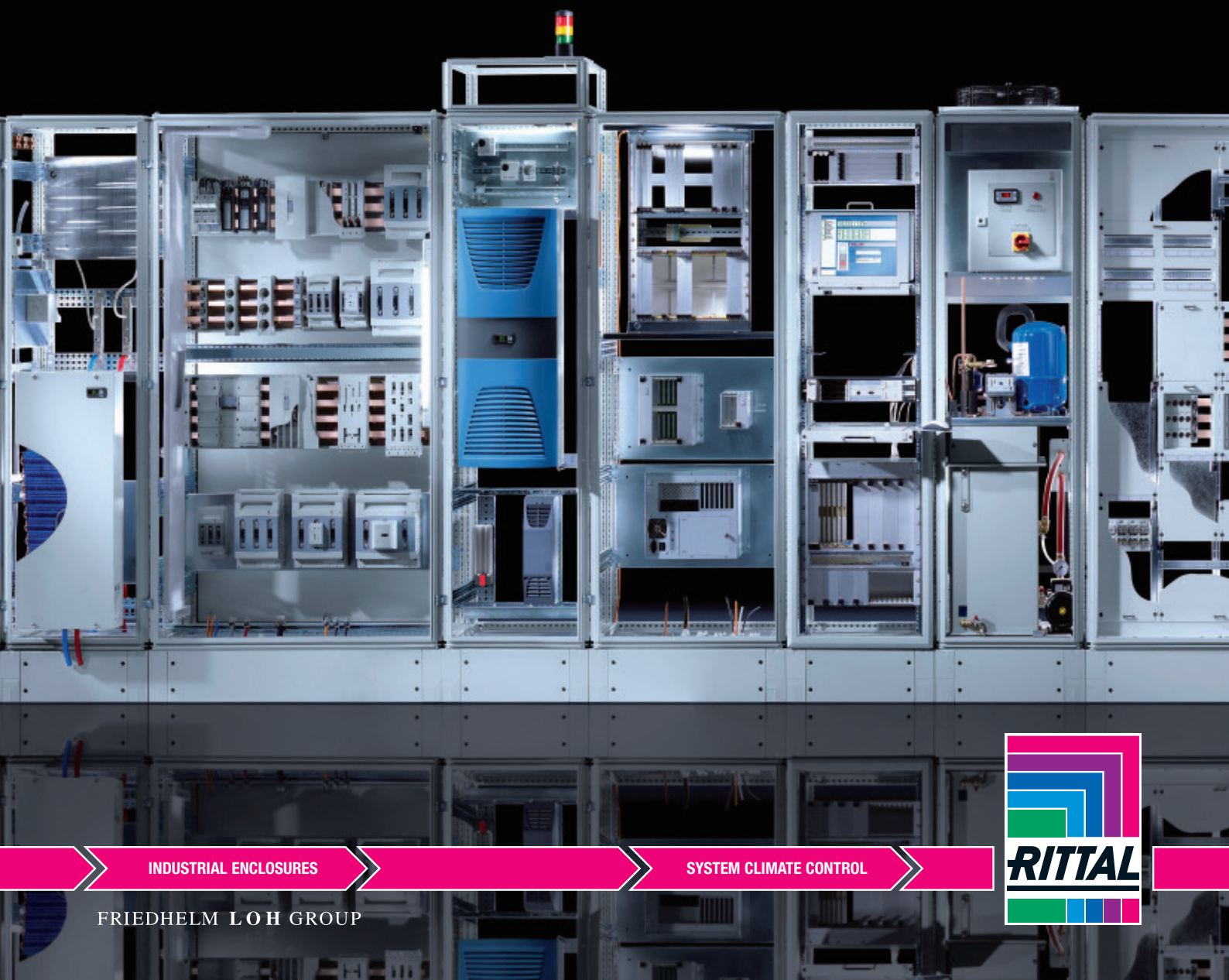


Rittal – The System.

Faster – better – worldwide.

Fast Find

Rittal Industrial Solutions



INDUSTRIAL ENCLOSURES

SYSTEM CLIMATE CONTROL

FRIEDHELM LOH GROUP



Rittal – The System.

Faster – better – worldwide.

For 50 years, and well into the future.

Faster.

For Rittal, being faster is not an empty promise, but a claim that is practised throughout every area of the company, and that is linked to direct customer benefits:

- **Fast** development of innovations, with short paths and fast decision-making
- **Fast** tapping of new markets and industries
- **Fast**, problem-free use of all products worldwide, thanks to national and international approvals
- **Fast** individual solutions through direct product development in collaboration with customers
- **Faster** thanks to a perfect interplay between development, engineering, products and service
- **Faster** thanks to flexible project implementation with system solutions from a single source



Better.

Many companies promise to be better. Rittal really is better. This isn't just an empty claim; it has been confirmed by independent experts and selection jury members. They bear witness to our outstanding innovations and corporate achievements with positive analyses and awards. Most important of all for us, however, is the confirmation we get from our customers. For 50 years, they have been placing their trust in us, and therefore play a large part in our current position as global market leaders.

The reasons for this are:

- **Better** with powerful innovative strength and the associated safeguarding of competitive advantages on the market
- **Better** thanks to certified quality in management, production and environmental protection
- **Better** thanks to rational production on state-of-the art, automated production lines
- **Better** through targeted solutions that are designed to make our customers' lives easier
- **Better** thanks to the verifiable energy efficiency of our products with tangible cost savings
- **Better** with outstanding education and training, and superbly trained staff



Worldwide.

For 50 years, and well into the future.

One major advantage that our customers really appreciate is our global presence. For more than 50 years we have been on hand to offer advice, assistance and products around the globe. We call this healthy customer relationships. It helps our customers to successfully tap into new markets. A dynamic status quo that we will be further expanding in future.

The cornerstones of our global availability:

- **Worldwide** thanks to outstanding logistics with 63 subsidiaries, 40 agencies, 100 warehouses total storage area of more than 160,000 m²
- **Worldwide** thanks to production sites on 3 continents, in 10 state-of-the-art plants with a total production area of more than 210.000 m²
- **Worldwide** thanks to global service with 5 global support points, more than 250 service partners and over 1,000 service engineers
- **Worldwide** thanks to international expertise with country-specific know-how and cross-regional approvals





Our strategy is based on a system of comprehensive solutions to address all requirements of our customers. An individual system that convinces by its logical design, the flexibility of the components, the high modularity, the ease of use and the immediate availability. Rittal offers you a complete solution with a unique system. All planning, engineering and service following one basic principle:

Rittal – The System.

Faster – better – worldwide.

- Service and Support
- Software and Planning
- Products

Content

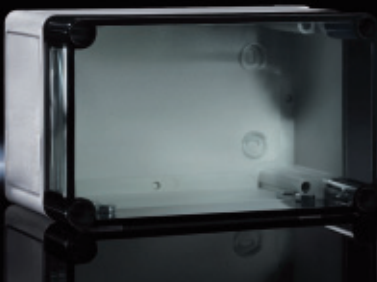
Boxes and enclosures

Polycarbonate enclosures PK.....	5
Terminal boxes KL.....	6
E box EB.....	7
Compact enclosures AE.....	8
Compact enclosures CM.....	9
Baying system TS 8.....	10
System enclosures SE 8.....	11
Stainless steel enclosures.....	12-13

System climatisation

Climate control.....	14
Enclosure heaters.....	15

Polycarbonate enclosures PK



Catalogue 33 page 28

PK accessories page 31

System accessories page 537

Polyamide cable gland page 709

Material:

- Housing of fibre-glass reinforced polyamide
- Cover either transparent (version .100) or grey (version .000), made from fibre-glass-reinforced polycarbonate
- Cover screws from polyamide
- Insulating bung from polyethylene
- All-round foamed-in PU seal

Colour:

RAL 7035

Protection category:

IP 66 to IEC 60 529

Supply includes:

- Enclosure with cover
- Cover screws
- Insulating bungs for wall mounting screws

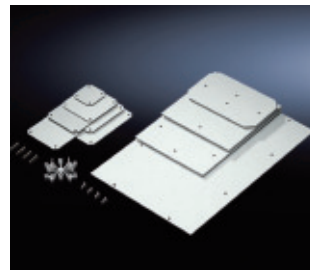
Approvals:

- UL
- Bureau Veritas

Detailed drawings:

Available on the internet

Dimensions mm			Model No: PK	Packs of	Accessories							
					Cover		Mounting plate	Support Rail TS 35/7,5		Wall mounting bracket	Turn-lock fasteners	Hinges
W	H	D		trans.	Grey			Installation in width	Installation in height			
65	65	57	9500.000	12	—	—	—	—	—	9583.000	9582.000	9580.000
94	65	57	9502.000	8	—	—	—	—	—	9583.000	9582.000	9580.000
94	94	57	9504.000	6	—	—	9564.000	9564.000	9583.000	9582.000	9580.000	
94	94	81	9505.000	6	—	—	9564.000	9564.000	9583.000	9582.000	9580.000	
110	110	66	9506.000	6	—	—	9564.000	9564.000	9583.000	9582.000	9580.000	
110	110	90	9507.000	6	—	—	9564.000	9564.000	9583.000	9582.000	9580.000	
130	94	57	9508.100	4	■	—	—	9565.000	9564.000	9583.000	9582.000	9580.000
130	94	57	9508.000	4	—	■	—	9565.000	9564.000	9583.000	9582.000	9580.000
130	94	81	9509.100	4	■	—	—	9565.000	9564.000	9583.000	9582.000	9580.000
130	94	81	9509.000	4	—	■	—	9565.000	9564.000	9583.000	9582.000	9580.000
130	130	75	9510.100	4	■	—	9545.000	9565.000	9565.000	9583.000	9582.000	9580.000
130	130	75	9510.000	4	—	■	9545.000	9565.000	9565.000	9583.000	9582.000	9580.000
130	130	99	9511.100	4	■	—	9545.000	9565.000	9565.000	9583.000	9582.000	9580.000
130	130	99	9511.000	4	—	■	9545.000	9565.000	9565.000	9583.000	9582.000	9580.000
180	94	57	9512.100	2	■	—	—	9566.000	9564.000	9583.000	9582.000	9580.000
180	94	57	9512.000	2	—	■	—	9566.000	9564.000	9583.000	9582.000	9580.000
180	94	81	9513.100	2	■	—	—	9566.000	9564.000	9583.000	9582.000	9580.000
180	94	81	9513.000	2	—	■	—	9566.000	9564.000	9583.000	9582.000	9580.000
180	110	90	9514.100	2	■	—	9547.000	9566.000	9564.000	9583.000	9582.000	9581.000
180	110	90	9514.000	2	—	■	9547.000	9566.000	9564.000	9583.000	9582.000	9581.000
180	110	111	9515.100	2	■	—	9547.000	9566.000	9564.000	9583.000	9582.000	9581.000
180	110	111	9515.000	2	—	■	9547.000	9566.000	9564.000	9583.000	9582.000	9581.000
180	110	165	9516.100	2	■	—	9547.000	9566.000	9564.000	9583.000	9582.000	9581.000
180	110	165	9516.000	2	■	■	9547.000	9566.000	9564.000	9583.000	9582.000	9581.000
182	180	90	9517.100	1	■	—	9548.000	9566.000	9566.000	9583.000	9582.000	9581.000
182	180	90	9517.000	1	—	■	9548.000	9566.000	9566.000	9583.000	9582.000	9581.000
182	180	111	9518.100	1	■	—	9548.000	9566.000	9566.000	9583.000	9582.000	9581.000
182	180	111	9518.000	1	—	■	9548.000	9566.000	9566.000	9583.000	9582.000	9581.000
182	180	165	9519.100	1	■	—	9548.000	9566.000	9566.000	9583.000	9582.000	9581.000
182	180	165	9519.000	1	—	■	9548.000	9566.000	9566.000	9583.000	9582.000	9581.000
254	180	90	9520.100	1	■	—	9549.000	9567.000	9566.000	9583.000	9582.000	9581.000
254	180	90	9520.000	1	—	■	9549.000	9567.000	9566.000	9583.000	9582.000	9581.000
254	180	111	9521.100	1	■	—	9549.000	9567.000	9566.000	9583.000	9582.000	9581.000
254	180	111	9521.000	1	—	■	9549.000	9567.000	9566.000	9583.000	9582.000	9581.000
254	180	165	9522.100	1	■	—	9549.000	9567.000	9566.000	9583.000	9582.000	9581.000
254	180	165	9522.000	1	—	■	9549.000	9567.000	9566.000	9583.000	9582.000	9581.000
360	254	111	9523.100	1	■	—	9550.000	9568.000	9567.000	9583.000	9582.000	9581.000
360	254	111	9523.000	1	—	■	9550.000	9568.000	9567.000	9583.000	9582.000	9581.000
360	254	165	9524.100	1	■	—	9550.000	9568.000	9567.000	9583.000	9582.000	9581.000
360	254	165	9524.000	1	—	■	9550.000	9568.000	9567.000	9583.000	9582.000	9581.000



Mounting plate

For universal interior installation

Material:

2.5mm melamine phenol-coated laminated paper

Colour:

RAL 7035

Supply includes:

- Mounting plate
- Self tapping assembly screws



Support rail

The support rail section provides good flexibility for accommodating terminal blocks and installed components

Colour:

RAL 7035

Supply includes:

- Support rails
- Self tapping assembly screws



Wall mounting brackets

The enclosure can be screwed to the wall using four wall mounting brackets. The bracket is securely attached to the enclosure by means of pins

Colour:

similar to RAL 7035

Supply includes:

1 Pack 40 pieces



Material:

Polyamide, grey



Hinges

For hinged attachment of covers. The supplied drilling template ensures problem-free assembly

Colour:

similar to RAL 7035

Supply includes:

- 1 set
- 2 hinges
- 4 assembly screws
- 4 polyethylene sealing bungs
- 1 drilling template

Terminal boxes KL



Material:

- Enclosure sheet steel
- Cover: Sheet steel, all-round foamed-in PU seal

Surface finish:

Enclosure and cover: Dipcoat-primed, powder coated on the outside, textured paint

Colour:

RAL 7035

Protection category

- Without gland plate: IP 66 to IEC 60 529, complies with NEMA 4
- With gland plate: IP 55 to IEC 60 529, complies with NEMA 12

Supply includes:

- Enclosure with cover
- Quick-action screw including plastic bushes
- For enclosures with gland plate plus sheet steel gland plates with seals and assembly parts

Approvals

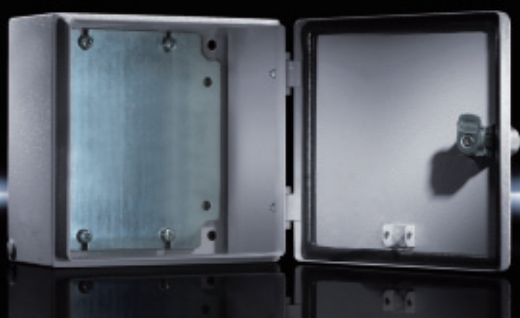
- UL
- CSA
- TÜV
- Germanischer Lloyd
- Russian Maritime Register of Shipping
- Lloyds Register of Shipping
- Bureau Veritas
- VDE

Detailed drawings:

Available on the internet

Catalogue 33 page 34 System accessories page 537 KL stainless steel page 183 KL for Ex areas page 198

Dimensions mm			Material thickness mm		Model No: KL	Gland plate	Weight (Kg)	Gland plate		Gland plate	Accessories								
											Mounting plate	Support rail TS 35/7,5	Support rail TS 35/15	Cover retainer	Cover hinge	Earthing set	Wall mounting bracket with 8 mm distance from wall	Optional quick-release fastener for KL Pk12	
W	H	D	Enclo- sure	Cover				Top	Bottom	Left	Right								
150	150	80	1,25	1,25	1514.510	—	1,4					1560.700	2314.000	—	1591.000	1592.000	2570.100	1590.000	1593.000
200	150	80	1,25	1,25	1528.510	—	1,6					1575.700	2315.000	—	1591.000	1592.000	2570.100	1590.000	1593.000
200	200	80	1,25	1,25	1516.510	—	1,9					1562.700	2315.000	—	1591.000	1592.000	2570.100	1590.000	1593.000
300	150	80	1,25	1,25	1515.510	—	2,1					1561.700	2316.000	—	1591.000	1592.000	2570.100	1590.000	1593.000
300	200	80	1,25	1,25	1517.510	—	2,6					1563.700	2316.000	—	1591.000	1592.000	2570.100	1590.000	1593.000
400	200	80	1,25	1,25	1518.510	—	3,2					1564.700	2317.000	—	1591.000	1592.000	2570.100	1590.000	1593.000
600	200	80	1,25	1,25	1519.510	—	4,6					1566.700	—	2319.000	1591.000	1592.000	2570.100	1590.000	1593.000
150	150	120	1,25	1,25	1500.510	—	1,6	—	—	—	—	1560.700	2314.000		1591.000	1592.000	2570.100	1590.000	1593.000
200	150	120	1,25	1,25	1529.510	—	1,8	—	—	—	—	1575.700	2315.000		1591.000	1592.000	2570.100	1590.000	1593.000
200	200	120	1,25	1,25	1502.510	—	2,3	—	—	—	—	1562.700	2315.000		1591.000	1592.000	2570.100	1590.000	1593.000
300	150	120	1,25	1,25	1501.510	—	2,6	—	—	—	—	1561.700	2316.000		1591.000	1592.000	2570.100	1590.000	1593.000
300	150	120	1,25	1,25	1530.510	■	2,7	2	1 + 1	—	—	1561.700	2316.000		1591.000	1592.000	2570.100	1590.000	1593.000
300	200	120	1,25	1,25	1503.510	—	3,0	—	—	—	—	1563.700	2316.000		1591.000	1592.000	2570.100	1590.000	1593.000
300	200	120	1,25	1,25	1531.510	■	3,3	2	1 + 1	—	—	1563.700	2316.000		1591.000	1592.000	2570.100	1590.000	1593.000
300	300	120	1,38	1,25	1507.510	—	4,0	—	—	—	—	1567.700	2316.000		1591.000	1592.000	2570.100	1590.000	1593.000
300	300	120	1,38	1,25	1535.510	■	4,5	2	1 + 1	2	1 + 1	1567.700	2316.000		1591.000	1592.000	2570.100	1590.000	1593.000
400	150	120	1,25	1,25	1589.510	—	3,2	—	—	—	—	1576.700	2317.000		1591.000	1592.000	2570.100	1590.000	1593.000
400	200	120	1,25	1,25	1504.510	—	3,6	—	—	—	—	1564.700	2317.000		1591.000	1592.000	2570.100	1590.000	1593.000
400	200	120	1,25	1,25	1532.510	■	4,0	2	1 + 1	—	—	1564.700	2317.000		1591.000	1592.000	2570.100	1590.000	1593.000
400	300	120	1,38	1,25	1508.510	—	4,8	—	—	—	—	1568.700	2317.000		1591.000	1592.000	2570.100	1590.000	1593.000
400	300	120	1,38	1,25	1536.510	■	5,2	2	1 + 1	2	1 + 1	1568.700	2317.000		1591.000	1592.000	2570.100	1590.000	1593.000
400	400	120	1,38	1,25	1511.510	—	6,2	—	—	—	—	1571.700	2317.000		1591.000	1592.000	2570.100	1590.000	1593.000
400	400	120	1,38	1,25	1539.510	■	6,7	2	1 + 1	2	1 + 1	1571.700	2317.000		1591.000	1592.000	2570.100	1590.000	1593.000
500	200	120	1,25	1,25	1505.510	—	4,4	—	—	—	—	1565.700	2318.000		1591.000	1592.000	2570.100	1590.000	1593.000
500	200	120	1,25	1,25	1533.510	■	4,9	2	2 + 2	—	—	1565.700	2318.000		1591.000	1592.000	2570.100	1590.000	1593.000
500	300	120	1,38	1,25	1509.510	—	5,8	—	—	—	—	1569.700	2318.000		1591.000	1592.000	2570.100	1590.000	1593.000
500	300	120	1,38	1,25	1537.510	■	5,2	2	2 + 2	2	1 + 1	1569.700	2318.000		1591.000	1592.000	2570.100	1590.000	1593.000
600	200	120	1,25	1,25	1506.510	—	5,7	—	—	—	—	1566.700	2319.000		1591.000	1592.000	2570.100	1590.000	1593.000
600	200	120	1,25	1,25	1534.510	■	5,9	2	2 + 2	—	—	1566.700	2319.000		1591.000	1592.000	2570.100	1590.000	1593.000
600	300	120	1,38	1,25	1510.510	—	6,8	—	—	—	—	1570.700	2319.000		1591.000	1592.000	2570.100	1590.000	1593.000
600	300	120	1,38	1,25	1538.510	■	7,7	2	2 + 2	2	1 + 1	1570.700	2319.000		1591.000	1592.000	2570.100	1590.000	1593.000
600	400	120	1,38	1,25	1512.510	—	8,4	—	—	—	—	1572.700	2319.000		1591.000	1592.000	2570.100	1590.000	1593.000
600	400	120	1,38	1,25	1540.510	■	9,0	2	2 + 2	2	1 + 1	1572.700	2319.000		1591.000	1592.000	2570.100	1590.000	1593.000
800	200	120	1,25	1,25	1527.510	—	6,8	—	—	—	—	1574.700	—		1591.000	1592.000	2570.100	1590.000	1593.000
800	200	120	1,25	1,25	1542.510	■	7,2	2	3 + 3	—	—	1574.700	—		1591.000	1592.000	2570.100	1590.000	1593.000
800	400	120	1,38	1,25	1513.510	—	11,0	—	—	—	—	1573.700	—		1591.000	1592.000	2570.100	1590.000	1593.000
800	400	120	1,38	1,25	1541.510	■	12,0	2	3 + 3	2	1 + 1	1573.700	—		1591.000	1592.000	2570.100	1590.000	1593.000



Catalogue 33 Page 37 System accessories Page 537 E box EMC-shielded page 201

Material:

- Enclosure: Sheet steel
- Door: Sheet steel, all-round foamed-in PU seal

Surface finish:

- Enclosure and door: Dipcoat-primed, powder-coated on the outside, textured paint
- Mounting plate: inc-plated

Colour:

RAL 7035

Protection category:

IP 66 IEC 60 529
complies with NEMA 4

Supply includes:

- Enclosure with hinged door
- 180 hinge
- Cam lock with double-bit insert
- Mounting plate

Approvals:

- UL
- CSA
- TV
- Germanischer Lloyd
- Russian Maritime Register of shipping
- Lloyds Register of Shipping
- Bureau Veritas
- VDE

Detailed drawings:

Available on the internet.

Depth 80 mm

Dimensions mm			Mounting plate mm		Material thickness mm		Model No. EB	Weight (Kg)	Accessories							
									Wall mounting bracket with 8 mm distance from wall	Pole clamp	Mounting clip	Support rail TS 35, length 2 m	Cable gland	Earth straps	Alternative lock systems	
W	H	D	W	H	Box	Door										
Qty.							1 unit		4 units		1 set		30 units			
150	150	80	125	135	1,25	1,25	1551.500	1,7	1590.000		2584.000		2309.000	See catalogue 33 page 655	See catalogue 33 page 709	See catalogue 33 page 689
150	300	80	125	285	1,25	1,25	1545.500	2,6	1590.000		2584.000		2309.000			
200	200	80	175	185	1,25	1,25	1546.500	2,4	1590.000		2584.000		2309.000			
200	300	80	175	285	1,25	1,25	1552.500	3,2	1590.000		2584.000		2309.000			
200	400	80	175	385	1,25	1,25	1547.500	4,4	1590.000		2584.000		2309.000			
150	150	120	125	135	1,25	1,25	1553.500	2,0	1590.000		2584.000		2309.000			
150	300	120	125	285	1,25	1,25	1548.500	3,0	1590.000		2584.000		2309.000			
200	200	120	175	185	1,25	1,25	1549.500	2,8	1590.000		2584.000		2309.000			
200	300	120	175	285	1,25	1,25	1554.500	3,6	1590.000		2584.000		2309.000			
200	400	120	175	385	1,25	1,25	1550.500	5,0	1590.000		2584.000		2309.000			
300	300	120	275	285	1,38	1,25	1555.500	5,0	1590.000		2584.000		2309.000			
300	400	120	275	385	1,38	1,25	1556.500	6,4	1590.000		2584.000		2309.000			
200	500	120	175	485	1,25	1,25	1557.500	6,2	1590.000		2584.000		2309.000			
300	400	155	275	385	1,38	1,25	1577.500	7,1	1590.000		2584.000		2309.000			
300	600	155	275	585	1,38	1,25	1578.500	11,0	1590.000		2584.000		2309.000			
300	800	155	275	785	1,38	1,25	1579.500	13,2	1590.000		2584.000		2309.000			
Page									627	629	655					

Wall mounting bracket



For the attachment of KL, EB, BG, and EL enclosures as well as DK wall-mounted distributors.

Supply includes:

Assembly parts for mounting on the enclosure.

Note:

For hygiene reasons, and in view of protection category, the stainless steel enclosures do not have any drilled holes for the wall mounting brackets.

Catalogue 33 page 627



For the attachment of KL, EB, BG, AE, CM and EL enclosures TP consoles as well as DK wall mounted distributors and small fibre-optic distributors.

Supply includes:

Assembly parts for mounting on the enclosure.

Note:

For hygiene reasons, and in view of protection category, the stainless steel enclosures do not have any drilled holes for the wall mounting brackets.

Catalogue 33 page 627

Plastic handles



With or without lock cylinder insert.

Supply includes:

Assembly parts and seals.
Catalogue 33 page 608

Compact enclosures AE



Material:

- Enclosure: Sheet steel
- Door: Sheet Steel, all-round foamed-in PU seal

Surface finish:

- Enclosure and door: Dipcoat-primed, powder-coated on the outside, textured paint
- Mounting plate: Zinc-plated

Catalogue 33 Page 44 System accessories Page 537 AE stainless page 184 AE IP 69K page 187 AE EMC-shielded page 201 Hygenic Design page 176

Supply includes:

- Enclosure with hinged door(s) of all round solid construction
- Gland plate(s) in enclosure base
- For single-door enclosures hinged on right, may be swapped to left (except with AE 1032.500 and AE 1035.500)
- With cam lock or 3-point lock system
- Mounting plate

Colour:

RAL 7035

Protection category:

See tables

Detailed drawings:

Available on the internet.

Approvals:

- UL
- CSA
- TV
- Germanischer Lloyd
- Russian Maritime Register of shipping
- Lloyds Register of Shipping
- Bureau Veritas
- VDE

Dimensions mm			Mounting plate mm		Material thickness mm		Mounting plate thickness mm	Cam lock ★ = 3-point locking system	Model No. AE	Weight (Kg)	Accessories					
											Gland plate		Rails for interior installation	Wall Brackets	Rain canopy	
W	H	D	W	H	Box	Door					Size	Qty			Sheet steel	Stainless steel
Qty.			1 unit								4 units		1 unit	1 unit	1 unit	
200	300	120	162	275	1,25	1,5	2,0	1	1032.500	4,0	1	1	—	2508.100	—	—
200	300	155	162	275	1,25	1,5	2,0	1	1035.500	4,5	1	1	—	2508.100	—	2470.000
300	300	155	254	275	1,38	1,5	2,0	1	1036.500	6,1	—	1	—	2508.100	—	—
300	300	210	254	275	1,38	1,5	2,0	1	1033.500	7,0	—	1	2373.210	2508.100	—	2361.000
300	400	210	254	375	1,38	1,5	2,0	1	1034.500	8,8	—	1	2373.210	2508.100	—	2361.000
380	300	155	334	275	1,38	1,5	2,0	1	1030.500	7,4	3	1	—	2508.100	—	2471.000
380	300	210	334	275	1,38	1,5	2,0	1	1031.500	7,5	3	1	2373.210	2508.100	2501.500	2472.000
380	380	210	334	355	1,38	1,5	2,0	1	1380.500	9,8	3	1	2373.210	2508.100	2501.500	2472.000
380	600	210	334	570	1,38	1,5	2,5	2	1038.500	15,6	3	1	2373.210	2508.100	2501.500	2472.000
380	600	350	334	570	1,5	1,5	2,5	2	1338.500	19,4	4	1	2373.350	2508.100	—	—
400	500	210	354	475	1,38	1,5	2	2	1045.500	13	4	1	2373.210	2508.100	—	—
400	800	300	349	770	1,5	2,0	3,0	2	1037.500	26,2	4	1	2373.300	2508.100	—	—
500	500	210	449	470	1,38	1,75	2,5	2	1050.500	16,8	4	1	2373.210	2508.100	—	2362.000
500	500	300	449	470	1,5	1,75	2,5	2	1350.500	19,6	4	1	2373.300	2508.100	—	—
500	700	250	449	670	1,5	2,0	2,5	2	1057.500	31,2	4	1	2373.250	2508.100	—	—
600	380	210	549	355	1,38	1,5	2,5	1	1039.500	15,4	5	1	2373.210	2508.100	2502.500	2473.000
600	380	350	549	355	1,5	1,5	2,5	1	1339.500	20,0	5	1	2373.350	2508.100	2511.500	—
600	600	210	549	570	1,38	1,75	2,5	2	1060.500	22,8	5	1	2373.210	2508.100	2502.500	2473.000
600	600	250	549	570	1,5	1,75	2,5	2	1054.500	24,8	5	1	2373.250	2508.100	—	—
600	600	350	549	570	1,5	1,75	2,5	2	1360.500	28,4	5	1	2373.350	2508.100	2511.500	—
600	760	210	549	730	1,38	2,0	3,0	2	1076.500	32,1	5	1	2373.210	2508.100	2502.500	2473.000
600	760	350	549	730	1,5	2,0	3,0	2	1376.500	36,0	5	1	2373.350	2508.100	2511.500	—
600	800	250	549	770	1,5	2,0	3,0	2	1058.500	33,6	5	1	2373.250	2508.100	—	—
600	1000	250	539	955	1,5	2,0	3,0	2	1090.500	50,5	5	1	2373.250	2508.100	—	—
600	1200	300	540	1155	1,5	2,0	3,0	★	1260.500	55,0	5	1	2373.300	2508.100	—	—
760	760	210	704	730	1,5	2,0	3,0	2	1077.500	40,0	5	1	2373.210	2508.100	—	—
760	760	300	704	730	1,5	2,0	3,0	2	1073.500	44,5	5	1	2373.300	2508.100	—	2474.000
800	600	300	749	570	1,5	2,0	2,5	2	1055.500	33,9	5	1	2373.300	2508.100	—	2475.000
800	1000	300	739	955	1,5	2,0	3,0	2	1180.500	57,0	5	1	2373.300	2508.100	—	2475.000
800	1200	300	740	1155	1,5	2,0	3,0	★	1280.500	70,0	5	1	2373.300	2508.100	—	2475.000
1000	760	210	944	730	1,5	2,0	3,0	2	1100.500	52	4	2	2373.210	2508.100	—	2363.000
1000	760	300	944	730	1,5	2	3	2	1130.500	56	4	2	2373.300	2508.100	—	2363.000
1000	1000	300	939	955	1,5	2,0	3,0	2	1110.500	71,0	4	2	2373.300	2508.100	—	2363.000
1000	1200	300	940	1155	1,5	2,0	3,0	★	1213.500	85,0	4	2	2373.300	2508.100	—	2363.000
1000	1400	300	940	1355	1,5	2,0	3,0	★	1114.500	97,0	4	2	2373.300	2508.100	—	2363.000
Page										704	647		627	619	619	

Compact enclosures CM



Material:

- Enclosure: Sheet steel 1.5mm
- Door: Sheet steel, 2.0mm, All-round foamed-in PU seal
- Mounting plate: Sheet steel, 3.0mm

Surface finish:

- Enclosure and door: Dipcoat-primed, powder-coated on the outside, textured paint
- Mounting plate: Zinc-plated

Catalogue 33 Page 50 System accessories Page 537 System lights page 679 Cable duct Page 716 Climate control page 389

Supply includes:

- Enclosure with hinged door(s)
- R/h door hinge with single-door enclosures, may be swapped to opposite side
- 3-point lock
- Mounting plate
- Open base for individual cable entry

Protection category:

IP 55 to IEC 60 529, complies with NEMA 12 provided suitable gland plates are selected.

Colour:

RAL 7035

Approvals:

- UL
- CSA
- TV
- Lloyds Register of Shipping

Detailed drawings:

Available on the internet.

Dimensions mm			Mounting plate mm		Model No. CM	Door	Base/plinth				Accessories											
							Components front and rear		Trim panels (sides)		Rail for interior installation		Matching punched sections with mounting flanges		Base configuration rail	Mounting plate slide block	Support strips for door	TS punched section with mounting flange, 17 x 73 mm	Cable clamp rails	Sheet steel wiring plan pocket, depth 35 mm	Rain canopy/vented roof	Alternative lock systems
W	H	D	W	H			Height 100 mm	Height 200 mm	Height 100 mm	Height 200 mm	For height	For width	In depth	In with								
Packs of					1		1	1	1	1	4	4	4	4	2	2	20	4	1	1	1	1
600	800	400	540	755	5110.500	1	8601.600	8602.600	8601.040	8602.040	5001.051	5001.050	8612.140	8612.060	5001.370	5001.070	4596.000	8612.050	5001.080	4116.500	5001.310	
600	1000	400	540	955	5111.500	1	8601.600	8602.600	8601.040	8602.040	5001.052	5001.050	8612.140	8612.060	5001.370	5001.070	4596.000	8612.050	5001.080	4116.500	5001.310	
600	1200	300	540	1155	5112.500	1	8601.600	8602.600	8601.030	8602.030	5001.053	5001.050	8612.130	8612.060	5001.371	5001.070	4596.000	8612.050	5001.080	4116.500	—	
600	1200	400	540	1155	5113.500	1	8601.600	8602.600	8601.040	8602.040	5001.053	5001.050	8612.140	8612.060	5001.370	5001.070	4596.000	8612.050	5001.080	4116.500	5001.310	
800	1000	300	740	955	5114.500	1	8601.800	8602.800	8601.030	8602.030	5001.052	5001.051	8612.130	8612.080	5001.371	5001.070	4598.000	—	5001.081	4118.500	—	
800	1000	400	740	955	5115.500	1	8601.800	8602.800	8601.040	8602.040	5001.052	5001.051	8612.140	8612.080	5001.370	5001.070	4598.000	—	5001.081	4118.500	5001.330	
800	1200	300	740	1155	5116.500	1	8601.800	8602.800	8601.030	8602.030	5001.053	5001.051	8612.130	8612.080	5001.371	5001.070	4598.000	—	5001.081	4118.500	—	
800	1200	400	740	1155	5117.500	1	8601.800	8602.800	8601.040	8602.040	5001.053	5001.051	8612.140	8612.080	5001.370	5001.070	4598.000	—	5001.081	4118.500	5001.330	
1000	1000	300	940	955	5118.500	2	8601.000	8602.000	8601.030	8602.030	5001.052	5001.052	8612.130	8612.000	5001.371	5001.070	4309.000	8612.040	5001.082	4115.500	—	
1000	1200	300	940	1155	5119.500	2	8601.000	8602.000	8601.030	8602.030	5001.053	5001.052	8612.130	8612.000	5001.371	5001.070	4309.000	8612.040	5001.082	4115.500	—	
1000	1200	400	940	1155	5120.500	2	8601.000	8602.000	8601.040	8602.040	5001.053	5001.052	8612.140	8612.000	5001.370	5001.070	4309.000	8612.040	5001.082	4115.500	5001.350	
1000	1400	300	940	1355	5121.500	2	8601.000	8602.000	8601.030	8602.030	5001.054	5001.052	8612.130	8612.000	5001.371	5001.070	4309.000	8612.040	5001.082	4115.500	—	
1000	1400	400	940	1355	5122.500	2	8601.000	8602.000	8601.040	8602.040	5001.054	5001.052	8612.140	8612.000	5001.370	5001.070	4309.000	8612.040	5001.082	4115.500	5001.350	
1200	1200	400	1140	1155	5123.500	2	8601.200	8602.200	8601.040	8602.040	5001.053	5001.053	8612.140	8612.020	5001.370	5001.070	4596.000	8612.050	5001.083	4116.500	5001.360	
Page							543	543	544	544	647	647	647	647	649	634	614	647	717	617	619	

See catalogue 33 page 599

Base/plinth, cable entry



Base/plinth 100 mm

Base/plinth component consisting of one trim and two pre-configured corner pieces.
Catalogue 33 page 543



Base/plinth 200 mm

Base/plinth component consisting of one trim and two pre-configured corner pieces.
Catalogue 33 page 543



Gland plate

Catalogue 33 page 560

Canopy/door



Canopy

Catalogue 33 page 619



Sheet steel wiring plan for TS, CM, SE, PC, TP pedestal

For fastening to tubular door frames at any height.
Catalogue 33 page 617



Rails for interior installation

Catalogue 33 page 647



TS punched section

Catalogue 33 page 647



TS support strips

Catalogue 33 page 650

Baying system TS 8



Material:

- Enclosure frame, roof, rear panel and gland plates: Sheet steel, 1.5 mm thick
- Door: Sheet steel, 2.0 mm
- Mounting plate: Sheet steel, 3.0 mm

Protection category:

IP 55 to IEC 60 529, complies with NEMA 12

Detailed drawings:

Available on the internet.

Surface finish:

- Enclosure frame: dipcoat-primed
- Door, roof and rear panel: Dip-coat-primed, powder-coated on the outside, textured paint
- Mounting plate and gland plates: inc-plated

Supply includes:

- Enclosure frame: with door(s), 3mm double-bit lock insert
- Mounting plate
- Gland plates
- Rear panel
- Roof plate
- 4 eyebolts

Approvals:

- UL
- CSA
- TV
- Russian Maritime Register of Shipping
- TV Mark
- Lloyds Register of Shipping
- Bureau Veritas
- VDE
- Germanischer Lloyd

Catalogue 33 page 72 System accessories Page 537 TS 8 corner enclosures page 583 TS 8 stainless steel Page 194 TS 8 EMC-shielded page 200

Dimensions mm			Mounting plate mm		Model No. TS	Door (s)	Weight (kg)	Support strips fitted in depth	Panels			Base/plinth				Accessories				
									Side panels	Divide panels	Divides panels for modules	Components front and rear		Trim panels, sides		Mounting plates	Cable clamp rails for cable clamps	Cable clamp rails (C section) for cable clamps	Section for cable entry, rear	Support strips for door
W	H	D	W	H								Height 100 mm	Height 200 mm	Height 100 mm	Height 200 mm					
600	1200	500	499	1096	8615.500	1	74,5		8115.235			8601.600	8602.600	8601.050	8602.050		4191.000	4944.000	8802.065	4596.000
800	1200	500	699	1096	8815.500	1	92,1		8115.235			8601.800	8602.800	8601.050	8602.050		4192.000	4945.000	8802.085	4598.000
1200	1200	500	1099	1096	8215.500	2	140,0		8115.235			8601.200	8602.200	8601.050	8602.050		4196.000	4947.000	8802.125	4596.000
600	1400	500	499	1296	8645.500	1	86,0		8145.235			8601.600	8602.600	8601.050	8602.050		4191.000	4944.000	8802.065	4596.000
800	1400	500	699	1296	8845.500	1	107,5		8145.235			8601.800	8602.800	8601.050	8602.050		4192.000	4945.000	8802.085	4598.000
1200	1400	500	1099	1296	8245.500	2	163,5		8145.235			8601.200	8602.200	8601.050	8602.050		4196.000	4947.000	8802.125	4596.000
600	1600	500	499	1496	8665.500	1	100,0		8165.235			8601.600	8602.600	8601.050	8602.050		4191.000	4944.000	8802.065	4596.000
800	1600	500	699	1496	8865.500	1	103,0		8165.235			8601.800	8602.800	8601.050	8602.050		4192.000	4945.000	8802.085	4598.000
1200	1600	500	1099	1496	8265.500	2	159,3		8165.235			8601.200	8602.200	8601.050	8602.050		4196.000	4947.000	8802.125	4596.000
600	1800	400	499	1696	8684.500	1	91,3		8184.235	8609.840		8601.600	8602.600	8601.040	8602.040		4191.000	4944.000	8802.065	4596.000
800	1800	400	699	1696	8884.500	1	113,5		8184.235	8609.840		8601.800	8602.800	8601.040	8602.040		4192.000	4945.000	8802.085	4598.000
1000	1800	400	899	1696	8084.500	1	136,4		8184.235	8609.840		8601.000	8602.000	8601.040	8602.040		4336.000	4946.000	8802.105	4599.000
1000	1800	400	899	1696	8080.500	2	140,0		8184.235	8609.840		8601.000	8602.000	8601.040	8602.040		4336.000	4946.000	8802.105	4309.000
1200	1800	400	1099	1696	8284.500	2	170,6		8184.235	8609.840		8601.200	8602.200	8601.040	8602.040		4196.000	4947.000	8802.125	4596.000
400	1800	500	—	—	8485.510 ¹⁾	1	49,2		8185.235	8609.850	8609.100	8601.400	8602.400	8601.050	8602.050	8614.180	4193.000	—	—	—
600	1800	500	499	1696	8685.500	1	93,8		8185.235	8609.850	8609.100	8601.600	8602.600	8601.050	8602.050	—	4191.000	4944.000	8802.065	4596.000
800	1800	500	699	1696	8885.500	1	115,8	■	8185.235	8609.850	8609.100	8601.800	8602.800	8601.050	8602.050	—	4192.000	4945.000	8802.085	4598.000
800	1800	500	699	1696	8880.500	2	122,5	■	8185.235	8609.850	8609.100	8601.800	8602.800	8601.050	8602.050	—	4192.000	4945.000	8802.085	4594.000
1200	1800	500	1099	1696	8285.500	2	173,3	■	8185.235	8609.850	8609.100	8601.200	8602.200	8601.050	8602.050	—	4196.000	4947.000	8802.125	4596.000
400	1800	600	—	—	8486.510 ¹⁾	1	51,7	■	8186.235	8609.860	8609.110	8601.400	8602.400	8601.060	8602.060	8614.180	4193.000	—	—	—
600	1800	600	499	1696	8686.500	1	96,8	■	8186.235	8609.860	8609.110	8601.600	8602.600	8601.060	8602.060	—	4191.000	4944.000	8802.065	4596.000
800	1800	600	699	1696	8886.500	1	120,3	■	8186.235	8609.860	8609.110	8601.800	8602.800	8601.060	8602.060	—	4192.000	4945.000	8802.085	4598.000
800	1800	600	699	1696	8881.500	2	125,8	■	8186.235	8609.860	8609.110	8601.800	8602.800	8601.060	8602.060	—	4192.000	4945.000	8802.085	4594.000
1200	1800	600	1099	1696	8286.500	2	179,9	■	8186.235	8609.860	8609.110	8601.200	8602.200	8601.060	8602.060	—	4196.000	4947.000	8802.125	4596.000
600	2000	400	499	1896	8604.500	1	99,0		8104.235	8609.040		8601.600	8602.600	8601.040	8602.040		4191.000	4944.000	8802.065	4596.000
800	2000	400	699	1896	8804.500	1	124,0		8104.235	8609.040		8601.800	8602.800	8601.040	8602.040		4192.000	4945.000	8802.085	4598.000
1000	2000	400	899	1896	8204.500	2	152,8		8104.235	8609.040		8601.000	8602.000	8601.040	8602.040		4336.000	4946.000	8802.105	4309.000
1200	2000	400	1099	1896	8004.500	2	184,5		8104.235	8609.040		8601.200	8602.200	8601.040	8602.040		4196.000	4947.000	8802.125	4596.000
400	2000	500	—	—	8405.510 ¹⁾	1	60,7		8105.235	8609.050	8609.120	8601.400	8602.400	8601.050	8602.050	8614.200	4193.000	—	—	—
600	2000	500	499	1896	8605.500	1	101,3		8105.235	8609.050	8609.120	8601.600	8602.600	8601.050	8602.050	—	4191.000	4944.000	8802.065	4596.000
800	2000	500	699	1896	8805.500	1	126,3		8105.235	8609.050	8609.120	8601.800	8602.800	8601.050	8602.050	—	4192.000	4945.000	8802.085	4598.000
1000	2000	500	899	1896	8005.500	2	157,1		8105.235	8609.050	8609.120	8601.000	8602.000	8601.050	8602.050	—	4336.000	4946.000	8802.105	4309.000
1200	2000	500	1099	1896	8205.500	2	190,6		8105.235	8609.050	8609.120	8601.200	8602.200	8601.050	8602.050	—	4196.000	4947.000	8802.125	4596.000
400	2000	600	—	—	8406.510 ¹⁾	1	55,7	■	8106.235	8609.060	8609.130	8601.400	8602.400	8601.060	8602.060	8614.200	4193.000	—	—	—
600	2000	600	499	1896	8606.500	1	104,0	■	8106.235	8609.060	8609.130	8601.600	8602.600	8601.060	8602.060	—	4191.000	4944.000	8802.065	4596.000
800	2000	600	699	1896	8806.500	1	130,5	■	8106.235	8609.060	8609.130	8601.800	8602.800	8601.060	8602.060	—	4192.000	4945.000	8802.085	4598.000
1000	2000	600	899	1896	8006.500	2	161,2	■	8106.235	8609.060	8609.130	8601.000	8602.000	8601.060	8602.060	—	4336.000	4946.000	8802.105	4309.000
1200	2000	600	1099	1896	8206.500	2	194,6	■	8106.235	8609.060	8609.130	8601.200	8602.200	8601.060	8602.060	—	4196.000	4947.000	8802.125	4596.000
600	2000	800	499	1896	8608.500	1	111,3	■	8108.235	8609.080		8601.600	8602.600	8601.080	8602.080		4191.000	4944.000	8802.065	4596.000
800	2000	800	699	1896	8808.500	1	137,0	■	8108.235	8609.080		8601.800	8602.800	8601.080	8602.080		4192.000	4945.000	8802.085	4598.000
1200	2000	800	1099	1896	8208.500	2	203,0	■	8108.235	8609.080		8601.200	8602.200	8601.080	8602.080		4196.000	4947.000	8802.125	4596.000
600	2200	600	499	2096	8626.500	1	113,1	■	8126.235	8609.260		8601.600	8602.600	8601.060	8602.060		4191.000	4944.000	8802.065	4596.000
800	2200	600	699	2096	8826.500	1	139,3	■	8126.235	8609.260		8601.800	8602.800	8601.060	8602.060		4192.000	4945.000	8802.085	4598.000
1200	2200	600	1099	2096	8226.500	2	208,0	■	8126.235	8609.260		8601.200	8602.200	8601.060	8602.060		4196.000	4947.000	8802.125	4596.000

¹⁾Without tubular door frame, mounting plate and gland plates. Protection category IP 55 and NEMA 12 are not met.

Base/plinth



Plinth elements

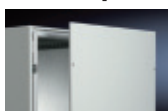
Front/rear
Height: 100 or 200 mm
Catalogue 33 page 543



Plinth elements

Side
Height: 100 or 200 mm
Catalogue 33 page 543

Doors/panels



Side panels

For TS 8
Height: 100 or 200 mm
Catalogue 33 page 567



Comfort handle

To replace standard lock.
For conventional lock
40 or 35 mm
Catalogue 33 page 603



Utility lectern

For programming units etc.
Prepared for mounting on the tubular door frame of TS, CM, SE, PC or any sufficiently large surface.



Sheet

System enclosures SE 8



The system of individual enclosures is based on the TS 8 platform and replaces the ES 5000 series.

Material:

- Enclosure: Sheet steel, 1.5 mm
- Door: Sheet steel, 2.0 mm
- Rear panel and gland plates: Sheet steel, 1.5 mm
- Mounting plate: Sheet steel, 3.0 mm

Surface finish:

- Enclosure, door/double door and rear panel: Dipcoat-primed powder-coated on the outside, textured paint
- Mounting plate and gland plates: inc-plated

Catalogue 33 page 98 System accessories Page 537 SE 8 stainless steel Page 195

Colour:
RAL 7035

Protection category:
IP 55 to IEC 60 529,
complies with NEMA 12

Supply includes:

- Enclosure with door(s) double-bit lock insert
- R/h door hinge with single-door enclosures, may be swapped to opposite side
- Mounting plate
- Rear panel (in two pieces from a width of 1600 mm), detachable

Note:

- The system accessories for this enclosure system may be found on the following order pages, with references to the respective product groups in the section on system assembly
- The system accessories classified under "ES" can only be used with free-standing enclosures in the ES 5000 series

Approvals

Available on the internet.

Detailed drawings:

Available on the internet.

Innovation

System enclosure SE 8, With: 600 - 800 mm

Dimensions mm			Mounting plate mm		Model No. SE	Door (s)	Base/plinth				Roof	Rail systems			Base	Accessories		
							Components front and rear		Trim panels, sides		Eyebolts	Other rail systems TS 8	Punched section with mounting flange, outer level	Punched section with mounting flange, inner level	Cable entry plate	Cable clamp rails for cable clamps	Alternative lock systems	
W	H	D	W	H			Height 100 mm	Height 200 mm	Height 100 mm	Height 200 mm								
Packs of			1				1 set		1 set		1 set		1 set		4			
600	1800	400	499	1696	5830.500	1	8601.600	8602.600	8601.040	8602.040	4568.000	See Cat 33 page 644	8612.040	8612.140	8800.060	4191.000	See Cat 33 page 600	
800	1800	400	699	1696	5831.500	1	8601.800	8602.800	8601.040	8602.040	4568.000		8612.040	8612.140	8800.080	4192.000		
800	2000	400	699	1896	5832.500	1	8601.800	8602.800	8601.040	8602.040	4568.000		8612.040	8612.140	8800.080	4192.000		
800	2000	500	699	1896	5833.500	1	8601.800	8602.800	8601.050	8602.050	4568.000		8612.050	8612.150	8800.080	4192.000		
800	2000	600	699	1896	5834.500	1	8601.800	8602.800	8601.060	8602.060	4568.000		8612.060	8612.160	8800.080	4192.000		

System enclosure SE 8, With: 1000 - 1800 mm

Dimensions mm			Mounting plate mm		Model No. SE	Door (s)	Base/plinth				Roof	Rail systems			Base	Accessories	
							Components front and rear		Trim panels, sides		Eyebolts	Other rail systems TS 8	Punched section with mounting flange, outer level	Punched section with mounting flange, inner level	Cable entry plate	Cable clamp rails for cable clamps	Alternative lock systems
W	H	D	W	H			Height 100 mm	Height 200 mm	Height 100 mm	Height 200 mm							
Packs of			1				1 set	1 set	1 set	1 set	4		1	1	2	2	
1000	1800	400	899	1696	5840.500	2	8601.000	8602.000	8601.040	8602.040	4568.000	See Cat 33 page 644	8612.040	8612.140	8800.100	4336.000	See Cat 33 page 600
1200	1800	400	1099	1696	5841.500	2	8601.200	8602.200	8601.040	8602.040	4568.000		8612.040	8612.140	8800.120	4196.000	
1600	1800	400	1499	1696	5842.500	2	8601.920	8602.920	8601.040	8602.040	4568.000		8612.040	8612.140	—	4338.000	
1200	2000	400	1099	1896	5843.500	2	8601.200	8602.200	8601.040	8602.040	4568.000		8612.040	8612.140	880.0120	4196.000	
1200	2000	500	1099	1896	5844.500	2	8601.200	8602.200	8601.050	8602.050	4568.000		8612.050	8612.150	880.0120	4196.000	
1200	2000	600	1099	1896	5845.500	2	8601.200	8602.200	8601.060	8602.060	4568.000		8612.060	8612.160	880.0120	4196.000	
1800	2000	500	1699	1896	5846.500	2	8601.980	8602.980	8601.050	8602.050	4568.000		8612.050	8612.150	—	4339.000	

Eyebolts



For TS, SE
For crane transportation of enclosures, where not already included in the supply.
Thread: M12

Catalogue 33 page 626

Cable clamp rails



Mounting angle for TS, SE, PC, TP universal console, base/plinths
For strain relief with cable entry.

Depth-variable mounting on a 25 mm pitch pattern on the horizontal enclosure section or in side base/plinth trim panels with assembly bolts.

Material: Steel

Surface finish: Zinc-plated

Supply includes: Assembly parts.

Catalogue 33 page 717

Cable entry plates



For
• Cable entry grommets
• Connector grommets instead of segments of the

standard divided gland plates.

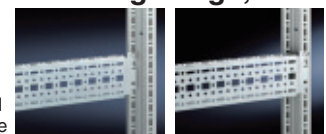
Material: Steel

Surface finish: Zinc-plated

Supply includes: Assembly parts.

Catalogue 33 page 701

TS punched section with mounting flange, 17 x 73 mm



Variable, with 5 rows of holes for universal skeleton structures or partial assembly. Simply locate into the TS punchings and secure.

Catalogue 33 page 647

Stainless steel enclosures



Also available on request with silicone gasket and in stainless steel 1,4404 AISI 316L

Catalogue 33 Page 182 System accessories page 537

Terminal boxes KL

Protection category IP 66/ IP 69 K

Dimensions mm			Model No. KL	Wall mounting bracket	Wall angle	Pole clamp	Roof hinge 1,4404 (AISI 316L)
W	H	D					
Packs of			1	2	4	1	2
150	150	80	1521.010	1594.000	2583.010	2584.000	1592.010
150	150	120	1527.010	1594.000	2583.010	2584.000	1592.010
300	150	80	1522.010	1594.000	2583.010	2584.000	1592.010
200	200	80	1523.010	1594.000	2583.010	2584.000	1592.010
200	200	120	1528.010	1594.000	2583.010	2584.000	1592.010
300	200	80	1524.010	1594.000	2583.010	2584.000	1592.010
300	200	120	1529.010	1594.000	2583.010	2584.000	1592.010
400	200	120	1525.010	1594.000	2583.010	2584.000	1592.010
300	300	120	1526.010	1594.000	2583.010	2584.000	1592.010
400	300	120	1530.010	1594.000	2583.010	2584.000	1592.010
Page			627		628	629	613

Compact enclosures AE

Protection category IP 69 K

Dimensions mm			Model No. AE	Interior door	Door stay	Wall mounting brackets 1,4301 (AISI 304)	Cable glands
W	H	D					
Packs of			1	1	1	4	
330	352	155	1101.110	1101.910	1101.800	2433.000	See page 709
400	439	250	1101.120	1101.920	1101.800	2433.000	
650	689	250	1101.130	1101.930	1101.800	2433.000	
650	689	250	1101.140	1101.940	1101.800	2433.000	
Page			588		617	627	

Also available on request with silicone gasket and in stainless steel 1,4404 AISI 316L

Protection category IP 66

Dimensions mm			Model No AE	Wall mounting bracket 1,4301 (AISI 304)	Wall mounting bracket 1,4304 (AISI 316L)	Wall angle 1,4301 (AISI 304)	Pole clamp	Cam lock 1,4404 (AISI 316L)
W	H	D						
Packs of			4	4	4	1	1	
200	300	120	1001.600	2433.000	—	2583.010	2584.000	2304.000
200	300	155	1002.600	2433.000	—	2583.010	2584.000	2304.000
200	300	155	1002.500	—	2433.500	2583.010	2584.000	2304.000
300	300	210	1003.600	2433.000	—	2583.010	2584.000	2304.000
380	300	155	1004.600	2433.000	—	2583.010	2584.000	2304.000
380	300	210	1011.600	2433.000	—	2583.010	2584.000	2304.000
300	380	210	1005.600	2433.000	—	2583.010	2584.000	2304.000
300	380	210	1005.500	—	2433.500	2583.010	2584.000	2304.000
380	380	210	1006.600	2433.000	—	2583.010	2584.000	2304.000
380	380	210	1006.500	—	2433.500	2583.010	2584.000	2304.000
600	380	210	1009.600	2433.000	—	2583.010	2584.000	2304.000
400	500	210	1015.600	2433.000	—	2583.010	2584.000	2304.000
500	500	210	1007.600	2433000	—	2583.010	2584.000	2304.000
500	500	300	1013.600	2433000	—	2583.010	2584.000	2304.000
380	600	210	1008.600	2433000	—	2583.010	2584.000	2304.000
600	600	210	1010.600	2473000	—	2583.010	2584.000	2304.000
600	600	210	1010.500	—	2433.500	2583.010	2584.000	2304.000
600	760	210	1012.600	2433000	—	2583.010	2584.000	2304.000
760	760	300	1014.600	2474.000	2433.000	2583.010	—	2304.000
800	1000	300	1016.600	2475.000	2433.000	2583.010	—	2304.000
800	1200	300	1017.600	2475.000	2433.000	2583.010	—	—
1000	1000	300	1018.600	2363.000	2433.000	2583.010	—	2304.000
1000	1200	300	1019.600	2363.000	2433.000	2583.010	—	—
1000	1200	300	1019.500	2363.000	—	2583.010	—	—
Page			627		627	628	609	

Alternative locking systems, see page 602



Catalogue 33 page 194
Baying systems TS 8, sheet steel Page 72
System accessories page 537
EMC baying systems TS 8 page 200

Enclosures TS 8

Protection category IP 55

Dimensions mm			Model No. TS 8	Side panels	Divider panel	Divider panel for module plates	Components front and rear	Components front and rear	Trim panels, sides	Trim panels, sides	Alternative lock systems	System lights
W	H	D					Height 100 mm	Height 200 mm	Height 100 mm	Height 200 mm		
Packs of			1	2	1	1	1 set	1 set	1 set	1 set		
800	1800	400	8454.600	8700.840	8609.840	—	8701.800	8702.800	8701.040	8702.040	See page 602	See page 679
1200	1800	400	8456.600	8700.840	8609.840	—	8701.200	8702.200	8701.040	8702.040		
600	1800	500	8457.600	8700.850	8609.850	8609.100	8701.600	8702.600	8701.050	8702.050		
800	1800	500	8455.600	8700.850	8609.850	8609.100	8701.800	8702.800	8701.050	8702.050		
1200	1800	500	8453.600	8700.850	8609.850	8609.100	8701.200	8702.200	8701.050	8702.050		
600	2000	600	8452.600	8700.060	8609.060	8609.130	8701.600	8702.600	8701.060	8702.060		
800	2000	600	8450.600	8700.060	8609.060	8609.130	8701.800	8702.800	8701.060	8702.060		
1200	2000	600	8451.600	8700.060	8609.060	8609.130	8701.200	8702.200	8701.060	8702.060		
Page			567		571	572	549	549	549	549		

Also available on request in stainless steel 1,4404 AISI 316L

Stainless steel enclosures



Material:

- Enclosure: Stainless steel 1.4301 (AISI 304), 1.5 mm
- Door(s): Stainless Steel, 1.4301 (AISI 304), 2.0 mm
- Rear panel: Stainless steel 1.4301 (AISI 304), 1.5 mm
- Mounting plate: Sheet steel, 3.0 mm

Surface finish:

- Enclosure rear panel gland plate and door(s)
- Mounting plate: Zinc-plated

Supply includes:

- Enclosure, solid top and sides
- Door(s)
- Rear panel, detachable
- Mounting plate
- Gland plates, divided
- locking rod with double-bit insert

Approvals:

Available on the internet

Detailed drawings:

Available on the internet

Protection category:

See tables

Note:

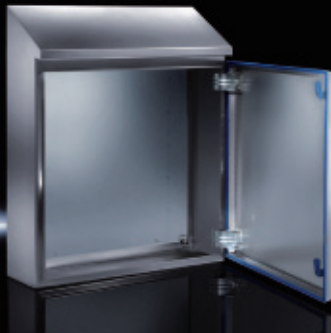
- Due to the hardness of the material, we recommend using metal multi-tooth screw S 2486.300, see page 666, for the interior installation
- The system accessories for this enclosure system may be found on the following order pages, or references to the respective product groups in the section on system assembly
- The system accessories classified under "ES" can only be used with free-standing enclosures in the ES 5000 series

Catalogue 33 Page 195 Accessories page 537

Innovation

System enclosures SE 8

Dimensions mm			Mounting plate mm		Model No. SE	Door(s)	Protection category	Base/plinth				Roof	Rail systems			Accessories	
								Components front and rear		Trim panels		Eyebolts	Other rail systems	Punched section with mounting flange, outer level	Punched section with mounting flange, inner level	Eyebolts	Alternative lock systems
W	H	D	W	H				Components front and rear 100 mm	Components front and rear 200 mm	Components front and rear 100 mm	Components front and rear 200 mm						
Packs of								1 set	1 set	1 set	1 set	4		4	4		
600	1600	400	499	1496	5850.500	1	IP 55 to IEC 60 259, Complies with NEMA 12	8701.600	8702.600	8701.040	8702.040	4568.000	See Cat 33 page 644	8612.040	8612.140	4568.000	See Cat 33 page 662
600	1800	500	499	1696	5851.500	1		8701.600	8702.600	8701.050	8702.050	4568.000		8612.050	8612.150		
800	1800	500	699	1696	5852.500	1		8701.800	8702.800	8701.050	8702.050	4568.000		8612.050	8612.150		
800	2000	600	699	1896	5853.500	1		8701.800	8702.800	8701.060	8702.060	4568.000		8612.060	8612.160		
1000	1800	400	899	1696	5854.500	1		8701.000	8702.000	8701.040	8702.040	4568.000		8612.040	8612.140		
1200	2000	500	1099	1896	5855.500	2		8701.200	8702.200	8701.050	8702.050	4568.000		8612.050	8612.150		
Page								549				626		647			



Supply includes:

- Enclosure of all-round solid construction
- Door with press-fitted seal
- Interchangeable door hinge
- Mounting plate

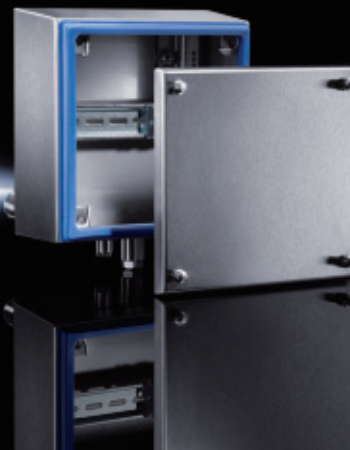
Catalogue 33 Page 177 HD accessories page 178
System accessories page 537

Compact enclosures Hygienic Design

Dimensions mm W H D			Model No. HD	Accessories		
				Wall spacer bracket HD	Rails for interior installation	Cable gland HD
220	350	155	1302.600	4000.100	See Cat 33 page 179	See Cat 33 page 711
390	430	210	1306.600	4000.100		
390	650	210	1308.600	4000.100		
510	550	210	1307.600	4000.100		
610	430	300	1320.600	4000.100		
610	650	210	1310.600	4000.100		
810	1050	300	1316.600	4000.100		
810	1250	300	1317.600	4000.100		

Supply includes:

- Enclosure of all-round solid construction
- Cover
- Mounting bracket (pre-assembled)
- Seal and quick-release locks (supplied loose)



Surface finish:

- Enclosure and door: Brushed, grain size 400, R_A 0.8 μ m
- Mounting plate: Zinc-plated
- Seal: Blue, dyed (RAL 5010)

Protection category:

- IP 66 to IEC 60 529

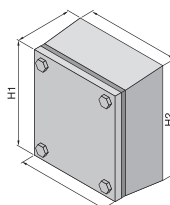
Material:

- Enclosure and door: Stainless steel 1.4301 (AISI 304)
- Mounting plate: Sheet steel
- Lock inserts HD: Stainless steel 1.4404 (AISI 316L)
- Seal: Silicone, complaint FDA Guideline 21 CFR 177.2600

Catalogue 33 Page 176 HD accessories page 178
System accessories page 537

Terminal boxes Hygienic Design

Dimensions mm					Model No. HD 1 unit
Width		Height		Depth	
front B1	rear B2	front H1	rear H2	T	
150	172	150	172	80	1670.600
150	177	150	177	120	1671.600
200	227	200	227	120	1672.600
300	327	200	227	120	1674.600
400	427	200	227	120	1675.600
400	427	300	327	120	1676.600



Climate control



Colour:
RAL 7035

Protection category:
See tables.

Supply includes:
• Unit ready for installation
• Filter mat

Note:
For energy-efficient operation of the fan-and-filter units, we recommend using the enclosure internal thermostat SK 311.000, the speed control SK 3120.200 or the digital thermostat with display SK 3114.200 (see accessories).

Approvals:
Available on the internet.

Detailed drawings:
Available on the internet.

Performance diagrams:
Available on the internet.

Catalogue 33 Page 394 Climate control accessories page 473 Software & services page 515

TopTherm fan-and-filter units

Air throughput 900 m³/h, with EC technology

Innovation

Model No. SK fan-and-filter unit	EMC version	Rated operating voltage V, Hz	Dimensions W x H x D	Air throughput, unimpeded air flow	Air throughput with outlet filter including standard filter mat
3245.500 ¹⁾	—	230, 50/60	323 x 323 x 25	900 m ³ /h	1 x SK 3243.200: 680 m³/h — 2 x SK 3243.200: 820 m³/h
3245.600 ¹⁾	—				1 x SK 3243.060: 680 m³/h — 2 x SK 3243.060: 820 m³/h
3245.510 ¹⁾	—	115, 50/60			1 x SK 3243.200: 680 m³/h — 2 x SK 3243.200: 820 m³/h

¹⁾ 0 - 10 V input and tachometer signal output

TopTherm fan-and-filter units

Model No.	Outlet filter	Air throughput unimpeded air flow	Rated operating voltage V, Hz
3237.100	3237.200	20/25 m ³ /h	230, 50/60
3237.110	3237.200	20/25 m ³ /h	115, 50/60
3237.124	3237.200	20 m ³ /h	24 (c.c.)
3238.100	3238.200	55/66 m ³ /h	230, 50/60
3238.110	3238.200	55/66 m ³ /h	115, 50/60
3238.124	3238.200	55 m ³ /h	24 (c.c.)
3239.100	3239.200	105/120 m ³ /h	230, 50/60
3239.110	3239.200	105/120 m ³ /h	115, 50/60
3239.124	3239.200	105 m ³ /h	24 (c.c.)
3240.100	3240.200	180/160 m ³ /h	230, 50/60
3240.110	3240.200	180/160 m ³ /h	115, 50/60
3240.124	3240.200	180 m ³ /h	24 (c.c.)
3241.100	3240.200	230/250 m ³ /h	230, 50/60
3241.110	3240.200	230/250 m ³ /h	115, 50/60
3241.124	3240.200	230 m ³ /h	24 (c.c.)
3243.100	3243.200	550/600 m ³ /h	230, 50/60
3243.110	3243.200	550/600 m ³ /h	115, 50/60
3244.100	3243.200	700/770 m ³ /h	230, 50/60
3244.110	3243.200	700/770 m ³ /h	115, 50/60
3244.140	3243.200	700/770 m ³ /h	400/460, 3~, 50/60

EMC versions

Model No.	Outlet filter	Air throughput unimpeded air flow	Rated operating voltage V, Hz
3237.600	3237.060	20/25 m ³ /h	230, 50/60
3238.600	3238.060	20/66 m ³ /h	230, 50/60
3239.600	3239.060	105/120 m ³ /h	230, 50/60
3240.600	3240.060	180/160 m ³ /h	230, 50/60
3241.600	3240.060	230/250 m ³ /h	230, 50/60
3244.600	3243.060	700/770 m ³ /h	230, 50/60

Conversion table old/new

Output class	20/25	55/66	105/120	180/160	230/250	550/600	700/770
Cut-out dimensions (old new)	92 x 92	124 x 124	177 x 177	224 x 224		292 x 292	
24 V	new 3237.124	3238.124	3239.124	3240.124	3241.124	—	—
	old 3321.027	3322.027	3323.027	3324.027	3325.027	—	—
230 V	new 3237.100	3238.100	3239.100	3240.100	3241.100	3243.100	3244.100
	old 3321.107	3322.107	3323.107	3324.107	3325.107	3326.107	3327.107
115 V	new 3237.110	3238.110	3239.110	3240.110	3241.110	3243.110	3244.110
	old 3321.117	3322.117	3323.117	3324.117	3325.117	3326.117	3327.117
400 V	new —	—	—	—	—	—	3244.140
	old —	—	—	—	—	—	3327.147
EMC fan-and-filter unit	new 3237.600	3238.600	3239.600	3240.600	3241.600	3243.600	3244.600
230V	old 3321.607	3322.607	3323.607	3324.607	3325.607	3326.607	3327.607
Outlet filter	new 3237.200	3238.200	3239.200	3240.200		3243.200	
	old 3321.207	3322.207	3323.207	3325.207		3326.207	
EMC	new 3237.060	3238.060	3239.060	3240.060		3243.060	
Outlet filter	old 3321.267	3322.267	3323.267	3325.267		3326.267	
Hose-proof hood	new 3237.080	3238.080	3239.080	3240.080		3243.080	
	old 3321.800	3322.800	3323.800	3324.800		3326.800	
Blanking cover	new 3237.020	3238.020	3239.020	3240.020		3243.020	
	old —	—	—	—	—	—	—
Standard filter mat (IP 54)	new 3321.700	3322.700	3171.100	3172.100		3173.100	
	old 3321.700	3322.700	3171.100	3172.100		3173.100	3327.700
Fine filter mat (IP 55)	new —	3238.055	3181.100	3182.100		3183.100	
	old —	—	3181.100	3182.100		3183.100	

Enclosure heaters

Supply includes:

- PTC heater
- Quick-connection terminal
- Assembly parts



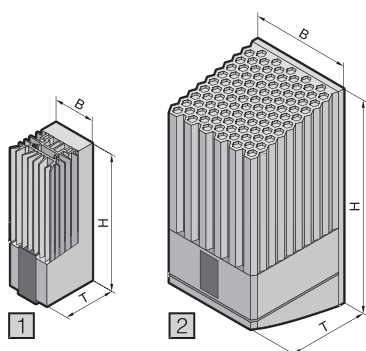
Catalogue 33 Page 471 Climate control accessories page 473
Software and services page 515

Note:

- For precise temperature control inside the enclosure, we recommend the enclosure internal thermostat SK 3110.000 or the digital thermostat SK 3114.200 with display (see accessories)
- In order to prevent condensation on assemblies, hygrostat SK 3118.00 (see accessories) is recommended to regulate heating.
- In larger enclosures, even heat distribution is best achieved by installing several low-output heaters.
- The installation of heaters is generally advisable, in order to prevent condensation.

1 Without fan, continuous thermal output 10-150 W

Model No. SK	Rated operating voltage V, Hz	Dimensions in mm An. x Al. x Pr.	Continuous thermal output Tu=10°C
3105.310	110-240 V, 50/60 Hz	45 x 120 x 46	8 – 10 W
3105.320			18 – 20 W
3105.330		64 x 155 x 56	23 – 30 W
3105.340			49 – 50 W
3105.350		64 x 230 x 56	63 – 75 W
3105.360		90 x 165 x 75	86 – 100
3105.370		90 x 180 x 75	130 – 150 W



2 With fan, continuous thermal output 250-800 W

Model No. SK	Rated operating voltage V, Hz	Dimensions in mm An. x Al. x Pr.	Continuous thermal output Tu=10°C
3105.410	110 V, 50/60 Hz	103 x 200 x 103	250 W ¹⁾
3105.380	230 V, 50/60 Hz		
3105.420	110 V, 50/60 Hz	103 x 200 x 103	400 W ¹⁾
3105.390	230 V, 50/60 Hz		
3105.430	110 V, 50/60 Hz	103 x 200 x 103	800 W ¹⁾
3105.400	230 V, 50/60 Hz		

1) Thermal output with fan

Rittal – The System.

Faster – better – worldwide.

- Enclosures
- Power Distribution
- Climate Control
- IT Infrastructure
- Software & Service

02/12

Rittal Limited, Braithwell Way, Hellaby Industrial Estate,
Hellaby, Rotherham, S. Yorks S66 8QY
Phone (01709) 704000 Fax (01709) 701217
E-mail: information@rittal.co.uk www.rittal.co.uk

ENCLOSURES

POWER DISTRIBUTION

CLIMATE CONTROL

IT INFRASTRUCTURE

SOFTWARE & SERVICES

FRIEDHELM LOH GROUP

