



netbiter[®] *Remote management of industrial equipment*

Monitor and control field equipment over the web

How do I manage equipment in the field?



What is the fuel level of my backup power generator?

How can I test start it without being on site?



How much power are my wind turbines producing?

Do they need service?



Is my pump station operating?

How much water is it pumping?



How can I configure my PLC remotely?

How can I operate my system without being on site?

Netbiter Remote Management

Access your field equipment anytime, anywhere

As an equipment manufacturer, owner or caretaker, you need to make sure that your machinery is operational. However, on-site maintenance and service trips are expensive and time-consuming.

The results?

Substantially reduced costs for service and better control of your equipment — benefits which will have effect on your business from day one.

With Netbiter, you have a way of staying on top of equipment status and operations remotely. You can track its performance, get alarms if something is wrong, and even manage and configure it via a regular computer or smartphone.



Connect a Netbiter gateway to your equipment in the field...



...and the information from the equipment automatically shows up in your web browser.

What you can do with Netbiter:

REMOTE ACCESS

Create a secure data tunnel to a PLC or machine to do programming, debugging or upgrades remotely.

VIEW AND CONTROL

Monitor a single machine via online dashboards, trend graphs, reports and alarms.

MANAGE AND ANALYZE

Manage multiple sites, machines or users. Integrate data into your own business system

Just like programming your machine on site

By configuring and troubleshooting your machinery remotely, you will save a lot of time and travel costs. You will also be able to provide better and faster service to your customers.

What you can do:

REMOTE ACCESS

Configure a PLC or machine remotely

Remote Access is a Netbiter service which opens up a secure communication tunnel to a PLC or machine. This enables configuration, programming or debugging of almost any industrial device from any location. You can use your regular PLC configuration software just as if you were on site.

Included with EC300-series gateways

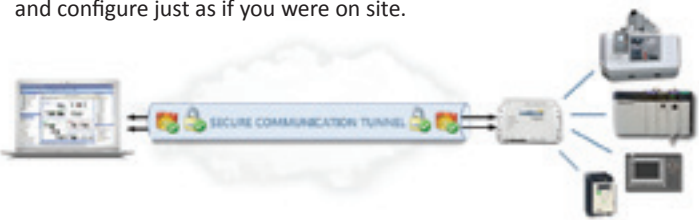
Remote Access is a free and included service when you buy a Netbiter EasyConnect 300-series gateway. It allows one user to connect to one machine (multiple users allowed with the Manage and Analyze service).

Up and running in less than 10 minutes

Once you have connected a Netbiter gateway to your device, you will be able to access it in a matter of minutes.

How it works

By running the Netbiter QuickConnect software on your computer, a secure tunnel is created to the Netbiter gateway which is connected to the remote device. You can then simply open your configuration software (RSLogix or TIA Portal etc.) and configure just as if you were on site.



The remote connection is established via the cloud-based data center Netbiter Argos (www.netbiter.net). It acts as a routing portal without the need for opening inbound ports in firewalls or setting up VPN connections on site. The result is a secure connection which is set up a matter of minutes.

Solid security

Data is encrypted both to and from Netbiter Argos and you can also choose a two-step verification method (you log in with a password and also get an SMS to verify your identity). This ensures a secure data connection to the remote equipment.

What you can do:

VIEW AND CONTROL

Manage a remote installation

View and Control is a Netbiter service which allows you to manage an installation remotely. Online dashboards, alarms and trend graphs give you full control from any location.

Included with all EasyConnect gateways

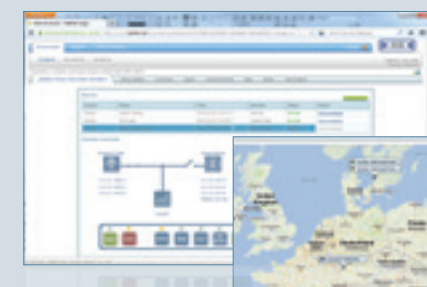
View and Control is a free and included service when you buy a Netbiter EasyConnect gateway. It allows one user account to

connect to one remote site (multiple users and sites available with the Manage and Analyze service).

Get up and running quickly with templates

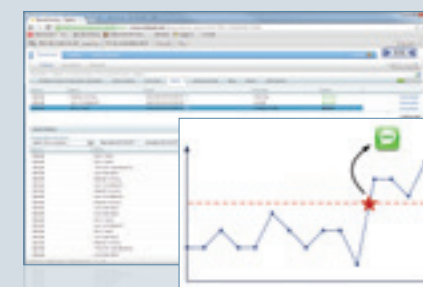
There are ready-made device templates giving you the basis of a configuration. A device template defines what data is contained in a specific device or application. From the template you can easily build a dedicated configuration by selecting which device parameters to monitor.

What can you do online with View and Control?



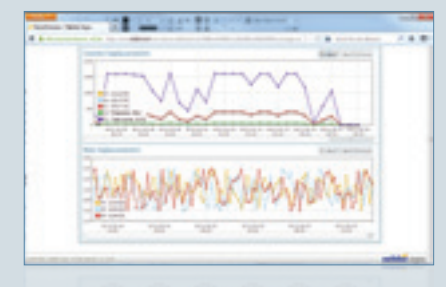
Visualize, monitor and control

A graphical user interface gives you a quick overview of system status. You easily design an intuitive layout for monitoring and control.



Detect critical events

Keep an eye on critical thresholds. In case attention is needed, a notification is sent to you via email or SMS.



Analyze

Analyzing trend data makes it possible to understand application behavior. Data from the field can be presented in trend graphs or reports.

Multi-language support

What you can do:

MANAGE AND ANALYZE

Use the full Netbiter functionality

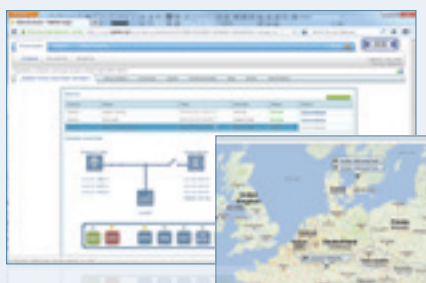
The Manage and Analyze service is designed for managing multiple installations with many users. You can customize the Netbiter web interface and integrate data into your own system with the Netbiter API.

Ready-made templates and profiles for fast deployment

Creating, using and deploying ready-made Device Templates

gets your installations online quickly. You can also use so called Device Profiles if you want to deploy the same settings on multiple sites. Device profiles contain visualization dashboards, data logging information, alarm configurations and device templates.

What can you do online with Manage and Analyze?



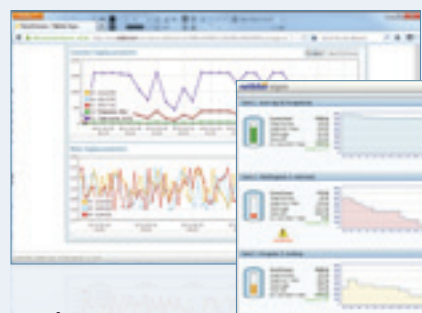
Visualize, monitor and control

A graphical user interface gives you a quick overview of system status. You easily design an intuitive layout for monitoring and control.



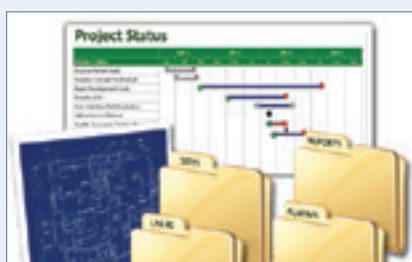
Detect critical events

Keep an eye on critical thresholds. In case attention is needed, a notification is sent to the responsible person via email or SMS.



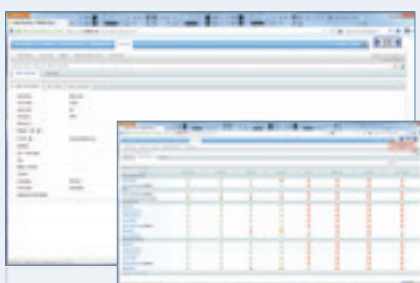
Analyze

Analyzing trend data makes it possible to understand application behavior. Data from the field can be presented in trend graphs, reports or third party applications.



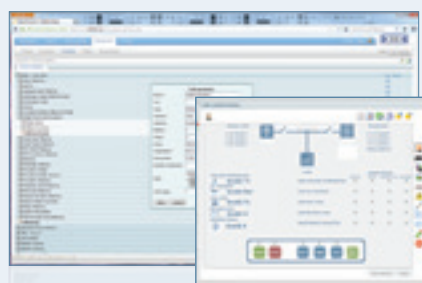
Project management

Group and organize sites into projects to get a good overview.



User management

Control project access, read/write permissions and distribute alarm notifications. Permission control is applied per individual user.



Tools and editors

It is easy to create a configuration and design a graphical application interface with the use of built-in tools and editors.

Application integration

The Netbiter Application Programming Interface (API) allows data from your field equipment to be presented in your own software applications, for example report tools or other applications. It is also possible to build a custom-made front end.



Custom front end



Service planning

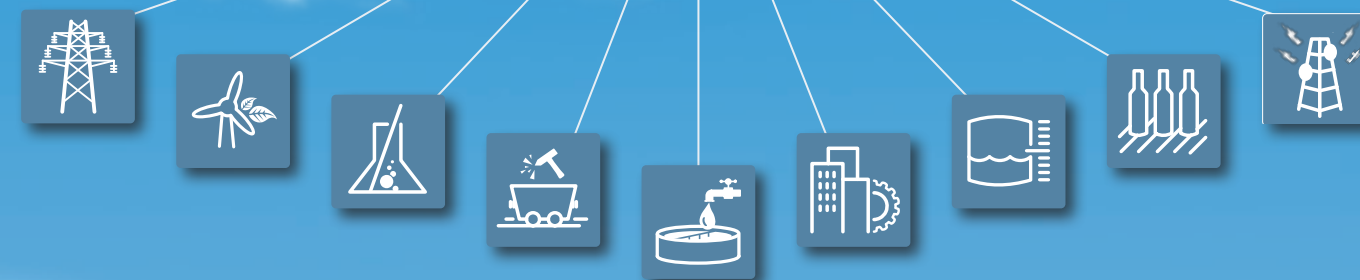


Report tools



Enterprise applications

netbiter argos



Multi-language support



Choose your communication gateway

Easy to connect

Netbiter gateways connect to your equipment via Modbus (serial or Ethernet), EtherNet/IP or an I/O connection. They communicate with Netbiter Argos via Ethernet or the mobile phone network (3G or GSM/GPRS).

The secure way to control field equipment

Netbiter’s secure communication method removes the need for a VPN connection. You simply connect the gateway to your equipment and manage it via Netbiter Argos.



	EasyConnect 220	EasyConnect 310	EasyConnect 350
Connection to equipment	Modbus (serial) or I/O	Modbus (serial or Ethernet), SNMP, EtherNet/IP or I/O	Modbus (serial or Ethernet), SNMP, EtherNet/IP or I/O
Connection to Argos	GSM/GPRS	Ethernet	Ethernet, 3G or GSM/GPRS
Housing	Metal	Metal	Metal
Remote access	No	Yes	Yes
View and control	Yes	Yes	Yes
Mange and analyze	Yes	Yes	Yes

Netbiter Starterkits

Netbiter Starterkits give you the possibility to quickly and easily evaluate a gateway and all its functionality. It contains a Netbiter gateway, accessories, documentation and Netbiter SIM-cards for 3G/GSM/GPRS versions.

Scan the QR code to see how to get up and running in less than 7 minutes.
www.netbiter.com/starterkits



Choose Netbiter service

	REMOTE ACCESS	VIEW AND CONTROL	MANAGE AND ANALYZE
	ONE USER — ONE SYSTEM	ONE USER — ONE SYSTEM	MULTIPLE USERS AND SYSTEMS
Create a data tunnel to a PLC or machine	✓	✓*	✓*
Remote programming of industrial PLC/machines	✓	✓*	✓*
Remote file transfer/firmware upgrades	✓	✓*	✓*
Monitor and control equipment remotely		✓	✓
Use dashboards/templates/profiles		✓	✓
Alarm management		✓	✓
View and download trend data		✓	✓
Map view (incl. alarm)			✓
Create and export data reports			✓
Single access point to all systems			✓
User management/multiple users			✓
Project management features			✓
Branding/API for enterprise integration			✓
	FREE WITH GATEWAY	FREE WITH GATEWAY	SUBSCRIPTION

**You can switch to Remote Access mode from View and Control / Manage and Analyze (if used with EC300-series gateway)*

Try Netbiter Argos today!

Log in to www.netbiter.net
User: demouser
Password: demouser

How it works:

netbiter argos

1. Netbiter gateway

A Netbiter communication gateway connects to your equipment in the field. The gateway sends data via the mobile phone network or Ethernet to the Netbiter Argos data center in the cloud. All data is encrypted.

2. Secure data storage in the cloud

The Netbiter Argos data center is a secure, cloud-based hosting service where all your data is stored and accessed.

3. Web access

You log in to www.netbiter.net to access your equipment via a regular PC, tablet, smartphone etc. You can also get alarms via email or SMS.

Why cloud technology?

- Software is provided as a service which means no costly software installations and lower maintenance costs.
- Instant, secure access from any location and any platform.
- Designed for scalability – use with one-off installations or large multi-user sites.
- Benefit from continuous improvements without the need for software upgrades.
- Easy integration with other tools and applications.
- Reduces the need for large capital investments.



HMS Industrial Networks



The Netbiter solution is developed by HMS Industrial Networks, a market leading independent supplier of industrial networking and remote management solutions. HMS has offices, distributors and partners in over 50 countries worldwide helping your business minimize service operating costs and improve equipment efficiency.

Support from the innovator of the industry

HMS is one of the pioneers of the remote management market and has grown to become one of the leading knowledge hubs within remote management and machine-to-machine communication. This expertise is at your disposal all the way through your remote management project.



www.netbiter.com

HMS Industrial Networks – worldwide

HMS - Sweden (HQ)

Tel : +46 (0)35 17 29 00 (Halmstad HQ)
Tel : +46 (0)35 17 29 24 (Västerås office)
E-mail: sales@hms-networks.com

HMS - France

Tel : +33 (0)368 368 034
E-mail: fr-sales@hms-networks.com

HMS - Italy

Tel : +39 039 59662 27
E-mail: it-sales@hms-networks.com

HMS - United States

Tel : +1 312 829 0601
E-mail: us-sales@hms-networks.com

HMS - China

Tel : +86 10 8532 1188
E-mail: cn-sales@hms-networks.com

HMS - Germany

Tel : +49 721 989777-000
E-mail: ge-sales@hms-networks.com

HMS - Japan

Tel : +81 (0)45 478 5340
E-mail: jp-sales@hms-networks.com

HMS - Denmark

Tel : +45 35 38 29 00
E-mail: dk-sales@hms-networks.com

HMS - India

Tel : +91 20 2563 0211
E-mail: in-sales@hms-networks.com

HMS - UK

Tel : +44 (0) 1926 405599
E-mail: uk-sales@hms-networks.com

Netbiter® is a registered trademark HMS Industrial Networks AB, Sweden. Other marks and words belong to their respective companies. All other product or service names mentioned in this document are trademarks of their respective companies.

Part No: MMN100 Version 4 08/2014 - © HMS Industrial Networks - All rights reserved - HMS reserves the right to make modifications without prior notice.

Patents pending for the Netbiter Remote Access functionality