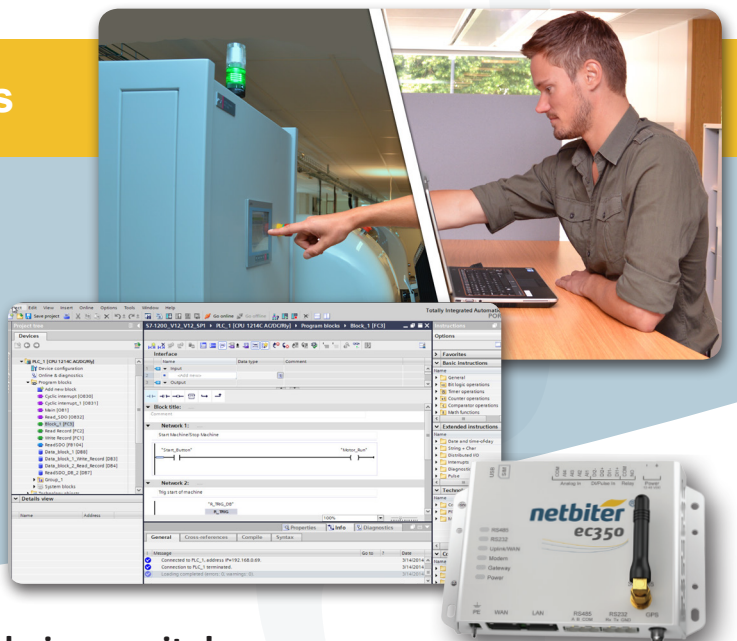




Remote Access – Siemens devices

Use your Siemens software tools remotely just as if you were on site. With a Netbiter gateway connected to your Siemens PLC or machine, you can do programming or debugging from any location using TIA Portal or STEP 7.

SIEMENS



What you get:

- ✓ Immediate remote access to your machinery at any time.
- ✓ Fewer service trips.
- ✓ Faster and better service to customers.

What you can do:

- ✓ Remote programming
- ✓ Remote debugging
- ✓ Remote file transfer
- ✓ Remote web server access.

Just like being on site!

The Netbiter Remote Management solution from HMS Industrial Networks allows you to open up a secure connection to remote machinery and devices. Through this connection, it is possible to do remote configuration, programming or debugging of your Siemens device from any location. Once the communication tunnel is open, you use your standard Siemens configuration software to configure the PLC or device.

How it works

On your computer, you run the Netbiter QuickConnect software and a secure tunnel is created to the Netbiter gateway which is connected to the remote device (via RS232 or Ethernet/LAN). You can then simply open TIA Portal or STEP 7 and configure or debug just as if you were on site.



The connection is established via Netbiter Argos in the cloud (www.netbiter.net) which acts as a routing portal. A Netbiter gateway registers at the Netbiter Argos cloud portal at power-up and establishes a remote connection without the need for opening inbound ports in firewalls or setting up VPN connections on site. The result is a secure connection which is set up a matter of minutes.

Is your device ready for Remote Access?

Almost any device can be connected to Netbiter Remote Access. A list of verified devices can be found on netbiter.com and HMS can assist you in testing an verifying your particular device.

Solid security

Security together with ease-of-use are the two main traits of Netbiter Remote Access. Data is encrypted both to and from Netbiter Argos and you can also choose a two-step verification method (you log in with a password and also get an SMS to verify your identity). This ensures secure data connection to your remote equipment.

TECHNICAL SPECIFICATIONS:

NETBITER EC300-SERIES GATEWAYS

Power supply	12-48 VDC
Power consumption (max at 24 dc)	4.5 W
Operating temperature	-40 to +65 °C
Mechanical dimensions (L•W•H)	92 x 135 x 27 mm
Mounting	Wall or DIN rail
Housing	Metal or plastic
Available versions	Netbiter EC310 (Ethernet only) Netbiter EC350 (Ethernet or cellular 3G/GPRS)

COMMUNICATION WITH SIEMENS DEVICES

Serial port	RS232
Ethernet	RJ45

SIEMENS DEVICES VERIFIED BY HMS

S7-1200 series (Ethernet) verified with S7-1211C	Step 7 TIA from Version V12, SP1
S7-1500 series (Ethernet) verified with S7-1500-1-PN	Step 7 TIA from Version V12, SP1
S7 300 series PN/DP (Ethernet) verified with S7-315-PN/DP	Step 7 TIA from Version V12, SP1
S7 300 series PN/DP (Serial) verified with S7-315-PN/DP	Step 7 Manager from V 5.5

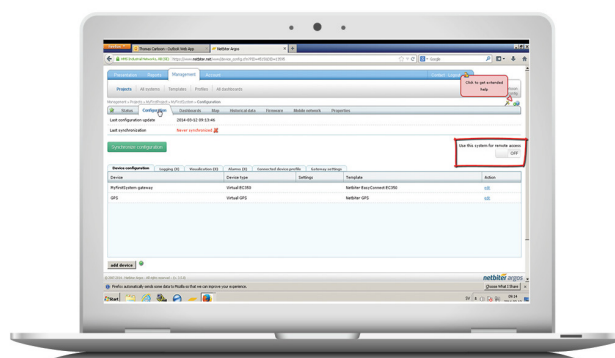
COMMUNICATION WITH NETBITER ARGOS

Ethernet	10/100 Mbit/s
3G/GSM/GPRS	3G: Five Band UMTS/HSPA+ (WCDMA/FDD) (850/800, 900, 1900 and 2100 MHz) GPRS: Quad-Band GPRS Class 12 (850/900/1800/1900 MHz)
Max amount of data to be sent over 3G	1 GB

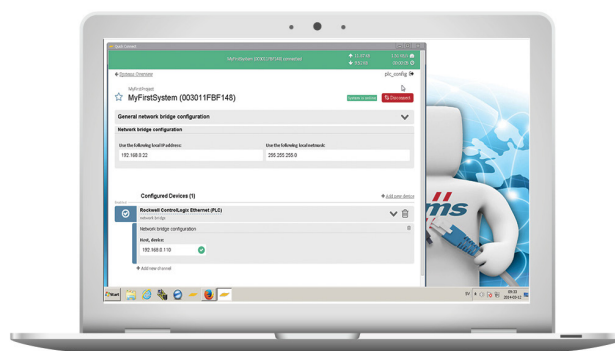


View video: Setup in 7:08

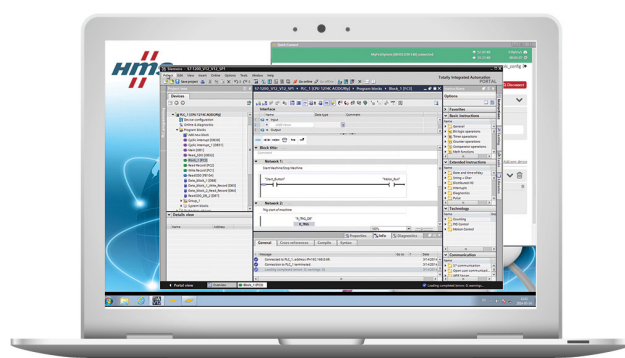
See the full process from connecting the Netbiter to the PLC, establishing the connection and configuring the PLC.
<https://www.youtube.com/watch?v=xHrSkcHcEwY>



Enable Remote Access inside Netbiter Argos.



Enter the IP address of your remote machine or PLC.



Open TIA Portal or STEP 7 and configure as usual.

HMS Industrial Networks – worldwide

HMS - Sweden (HQ)

Tel: +46 (0)35 17 29 00 (Halmstad HQ)
Tel: +46 (0)35 17 29 24 (Västerås office)
E-mail: sales@hms-networks.com

HMS - China

Tel: +86 (0)10 8532 3183
E-mail: cn-sales@hms-networks.com

HMS - Denmark

Tel: +45 35 38 29 00
E-mail: dk-sales@hms-networks.com

HMS - France

Tel: +33 (0)368 368 034
E-mail: fr-sales@hms-networks.com

HMS - Germany

Tel: +49 721 989777-000
E-mail: ge-sales@hms-networks.com

HMS - India

Tel: +91 20 40111201
E-mail: in-sales@hms-networks.com

HMS - Italy

Tel: +39 039 59662 27
E-mail: it-sales@hms-networks.com

HMS - Japan

Tel: +81 (0)45 478 5340
E-mail: jp-sales@hms-networks.com

HMS - UK

Tel: +44 (0) 1926 405599
E-mail: uk-sales@hms-networks.com

HMS - United States

Tel: +1 312 829 0601
E-mail: us-sales@hms-networks.com