



SINAMICS Converters for Single-Axis Drives

**Edition
December
2018**

[siemens.com/sinamics-g120x](https://www.siemens.com/sinamics-g120x)

Order overview

SINAMICS G120X infrastructure converters for HVAC/Water/Wastewater

Clicking to the Industry Mall

6SL3255-0AA00-5AA0



Selection and ordering data

SINAMICS G120X infrastructure converters for HVAC/Water/Wastewater · Degree of protection IP20/UL Open Type · 380 ... 480 V 3 AC

SINAMICS G120X							Line-side components	
Rated power ¹⁾		Base-load current I_L ²⁾		Rated input current ³⁾	Frame size	SINAMICS G120X Degree of protection IP20/UL Open Type without integrated line filter	SINAMICS G120X Degree of protection IP20/UL Open Type with integrated line filter	Line filters Category C2
400 V kW	480 V hp	400 V A	480 V A	400 V A		Converters up to 132 kW delivery ex stock	Converters up to 132 kW delivery ex stock	Article No.
						10 ... 48 ↓↑	10 ... 48 ↓↑	Article No.
380 ... 480 V 3 AC · Rated pulse frequency 4 kHz ≤ 90 kW and 2 kHz ≥ 110 kW · Input frequency 47 ... 63 Hz								
0.75	1	2.2	2.1	2.1	FSA	6SL32 0- YE10- U 0	6SL32 0- YE10- A 0	SINAMICS G120X available with integrated line filter Category C2
1.1	1.5	3.1	3	2.8	FSA	6SL32 0- YE12- U 0	6SL32 0- YE12- A 0	
1.5	2	4.1	3.4	3.6	FSA	6SL32 0- YE14- U 0	6SL32 0- YE14- A 0	
2.2	3	5.9	4.8	5.5	FSA	6SL32 0- YE16- U 0	6SL32 0- YE16- A 0	
3	4	7.7	6.2	6.9	FSA	6SL32 0- YE18- U 0	6SL32 0- YE18- A 0	
4	5	10.2	7.6	9.8	FSB	6SL32 0- YE20- U 0	6SL32 0- YE20- A 0	
5.5	7.5	13.2	11	12	FSB	6SL32 0- YE22- U 0	6SL32 0- YE22- A 0	
7.5	10	18	14	17	FSB	6SL32 0- YE24- U 0	6SL32 0- YE24- A 0	
11	15	26	21	24.5	FSC	6SL32 0- YE26- U 0	6SL32 0- YE26- A 0	
15	20	32	27	29.5	FSC	6SL32 0- YE28- U 0	6SL32 0- YE28- A 0	
18.5	25	38	34	37	FSD	6SL32 0- YE30- U 0	6SL32 0- YE30- A 0	
22	30	45	40	44	FSD	6SL32 0- YE32- U 0	6SL32 0- YE32- A 0	
30	40	60	52	59	FSD	6SL32 0- YE34- U 0	6SL32 0- YE34- A 0	
37	50	75	65	72	FSD	6SL32 0- YE36- U 0	6SL32 0- YE36- A 0	
45	60	90	77	89	FSE	6SL32 0- YE38- U 0	6SL32 0- YE38- A 0	
55	75	110	96	107	FSE	6SL32 0- YE40- U 0	6SL32 0- YE40- A 0	
75	100	145	124	144	FSF	6SL32 0- YE42- U 0	6SL32 0- YE42- A 0	
90	125	178	156	177	FSF	6SL32 0- YE44- U 0	6SL32 0- YE44- A 0	
110	150	205	180	203	FSF	6SL32 0- YE46- U 0	6SL32 0- YE46- A 0	
132	200	250	240	247	FSF	6SL32 0- YE48- U 0	6SL32 0- YE48- A 0	
160	250	302	302	308	FSG	–	6SL32 0- YE50- 0 0	6SL3760-0MR00-0AA0
200	300	370	361	374	FSG	–	6SL32 0- YE52- 0 0	
250	400	477	477	482	FSG	–	6SL32 0- YE54- 0 0	
315	400	570	477	597	FSH	–	6SL32 2 0- YE56- 0 C F 0	
355	450	640	515	668	FSH	–	6SL32 2 0- YE58- 0 C F 0	
400	500	720	590	750	FSH	–	6SL32 2 0- YE60- 0 C F 0	
450	500	820	663	870	FSJ	–	6SL32 2 0- YE62- 0 C F 0	
500	600	890	724	945	FSJ	–	6SL32 2 0- YE64- 0 C F 0	
560	700	1000	830	1061	FSJ	–	6SL32 2 0- YE66- 0 C F 0	

Article No. supplements

Environmental class/harmful chemical substances acc. to EN 60721-3-3

Class 3C2 – delivery ex stock

Class 3C3 * (available soon)

Operator Panel

Without Operator Panel *

With BOP-2 Basic Operator Panel (numeric 2-line display) *

With IOP-2 Intelligent Operator Panel (graphic color display) – delivery ex stock

Extension with SINAMICS G120X I/O Extension Module (available soon)

Without extension – delivery ex stock

Line filter

Without integrated line filter – delivery ex stock

With integrated line filter Category C2 – delivery ex stock

With integrated line filter Category C3 *

Communication

(variants for PROFIBUS DP or USS, Modbus RTU, BACnet MS/TP available soon)

PROFINET, EtherNet/IP – delivery ex stock

* If you select one of these supplements, the delivery time for converters up to 132 kW will change from "delivery ex stock" to "standard delivery time".

¹⁾ Rated power based on the base-load current I_L . The base-load current I_L is based on the duty cycle for low overload (LO).

²⁾ The base-load current I_L is based on the duty cycle for low overload (LO). These current values are valid for 400 V or 480 V and are specified on the rating plate of the converter.

³⁾ The input current depends on the motor load and line impedance. The input currents apply for a load at rated power (based on I_L) for a line impedance corresponding to $u_k = 1\%$. The current values are specified on the rating plate of the converter.

⁴⁾ The Short Circuit Current Rating (SCCR) according to UL for industrial control panel installations to NEC Article 409 or UL 508A/508C or UL 61800-5-1 is 100 kA for SINAMICS G120X.



Line-side components (continued)						Load-side power components		
Line filters (continued) Category C1	Line reactors	Recommended line-side overcurrent protection devices				Output reactors	Sine-wave filters	dv/dt filters plus VPL
	For frame sizes FSH and FSJ mandatory when using an external line filter Category C2	Fuses IEC-compliant	Fuses UL/cUL-compliant Rated voltage 600 V AC 4)					
Article No.	Article No.	Current A	Article No.	Fuse type Class/ Article No.	Current A	Article No.	Article No.	Article No.
Available soon	A DC link reactor is integrated for frame sizes FSA to FSG – therefore no line reactor is required.	10	3NA3803	J	10	A DC link reactor is integrated for frame sizes FSA to FSC – therefore long cable lengths are possible without output reactors.	Available soon	–
		16	3NA3805	J	15			–
		16	3NA3805	J	15			–
		16	3NA3805	J	15			–
		16	3NA3805	J	15			–
		32	3NA3812	J	35			–
		32	3NA3812	J	35			–
		32	3NA3812	J	35			–
		50	3NA3820	J	50			–
		50	3NA3820	J	50			–
		63	3NA3822	J	60	Available soon		Available soon
		80	3NA3824	J	70			
		100	3NA3830	J	90			
		100	3NA3830	J	100			
		125	3NA3832	J	125			
		160	3NA3836	J	150			
		200	3NA3140	J	200			
		224	3NA3142	J	250			
		300	3NA3250	J	300			
–		315	3NA3252	J	350			
–		355	3NA3254	J	400			
–		400	3NA3260	J	500			
–		630	3NA3372	J	600			
–	6SL3000-0CE36-3AA0	710	3NE1437-2		710	6SL3000-2AE36-1AA0	–	6SL3000-2DE38-4AA0
–	6SL3000-0CE37-7AA0	800	3NE1438-2		800	6SL3000-2AE38-4AA0	–	
–		850	3NE1448-2		850		–	
–	6SL3000-0CE38-7AA0	1000	3NB3350-1KK26		1000	6SL3000-2AE41-0AA0	–	6SL3000-2DE41-4AA0
–	6SL3000-0CE41-0AA0	1100	3NB3351-1KK26		1100		–	
–		1250	3NB3352-1KK26		1250	6SL3000-2AE41-4AA0	–	

Ordering examples

Basic selection

SINAMICS G120X converters · degree of protection IP20/UL Open Type · 380 ... 480 V 3 AC, 15 kW · with integrated line filter – [converters up to 132 kW delivery ex stock](#)

Article No. supplements

Environmental class/harmful chemical substances acc. to EN 60721-3-3

Class 3C2 – **delivery ex stock**

Class 3C3 * (available soon)

Operator Panel

Without Operator Panel *

With BOP-2 Basic Operator Panel (numeric 2-line display) *

With IOP-2 Intelligent Operator Panel (graphic color display) – **delivery ex stock**

Extension with SINAMICS G120X I/O Extension Module (available soon)

Without extension – **delivery ex stock**

Line filter

Without integrated line filter – **delivery ex stock**

With integrated line filter Category C2 – **delivery ex stock**

With integrated line filter Category C3 *

Communication

(variants for PROFIBUS DP or USS, Modbus RTU, BACnet MS/TP available soon)

PROFINET, EtherNet/IP – **delivery ex stock**

Complete Article No.

Figure 1 consists of two main sections, Example 1 and Example 2, each containing two bar charts. The charts show the optimal order quantity for different delivery scenarios and options. The x-axis for each chart lists the options: 6SL32, 2, 0, 3, YE28-, 0, A, F, 0. The y-axis represents the optimal order quantity, with values 2, 3, 0, and A marked on the bars.

Example 1:

- Delivery ex stock:** The optimal order quantity is 2 for 6SL32, 3 for 2, 0 for 0, 3 for YE28-, 0 for 0, A for A, and F for F.
- Standard delivery time:** The optimal order quantity is 3 for 6SL32, 0 for 2, 2 for 0, 3 for YE28-, 0 for 0, A for A, and F for F.

Example 2:

- Delivery ex stock:** The optimal order quantity is 2 for 6SL32, 3 for 2, 0 for 0, 3 for YE28-, 0 for 0, A for A, and F for F.
- Standard delivery time:** The optimal order quantity is 3 for 6SL32, 0 for 2, 2 for 0, 3 for YE28-, 0 for 0, A for A, and F for F.

* If you select one of these supplements, the delivery time for converters up to 132 kW will change from "delivery ex stock" to "standard delivery time".

Order overview

SINAMICS G120X infrastructure converters for HVAC/Water/Wastewater

Clicking to the Industry Mall

6SL3255-0AA00-5AA0



Selection and ordering data (continued)

SINAMICS G120X infrastructure converters for HVAC/Water/Wastewater · Degree of protection IP20/UL Open Type · 500 ... 690 V 3 AC

SINAMICS G120X							Line-side components	
Rated power ¹⁾		Base-load current <i>I</i> _L ²⁾		Rated input current ³⁾	Frame size	SINAMICS G120X Degree of protection IP20/UL Open Type without integrated line filter	SINAMICS G120X Degree of protection IP20/UL Open Type with integrated line filter	Line filters Category C2
690 V kW	600 V hp	690 V A	600 V A	690 V A		Article No.	Article No.	Article No.
500 ... 690 V 3 AC · Rated pulse frequency 2 kHz · Input frequency 47 ... 63 Hz								
3	4	5	5	6	FSD	6SL32 0-0-YH18-U 0	6SL32 0-0-YH18-A 0	SINAMICS G120X available with integrated line filter Category C2
4	5	6.3	6.3	7	FSD	6SL32 0-0-YH20-U 0	6SL32 0-0-YH20-A 0	
5.5	7.5	9	9	10	FSD	6SL32 0-0-YH22-U 0	6SL32 0-0-YH22-A 0	
7.5	10	11	11	12	FSD	6SL32 0-0-YH24-U 0	6SL32 0-0-YH24-A 0	
11	10	14	14	15	FSD	6SL32 0-0-YH26-U 0	6SL32 0-0-YH26-A 0	
15	15	19	19	19	FSD	6SL32 0-0-YH28-U 0	6SL32 0-0-YH28-A 0	
18.5	20	23	23	23	FSD	6SL32 0-0-YH30-U 0	6SL32 0-0-YH30-A 0	
22	25	27	27	26	FSD	6SL32 0-0-YH32-U 0	6SL32 0-0-YH32-A 0	
30	30	35	35	34	FSD	6SL32 0-0-YH34-U 0	6SL32 0-0-YH34-A 0	
37	40	42	42	41	FSD	6SL32 0-0-YH36-U 0	6SL32 0-0-YH36-A 0	
45	50	52	52	52	FSE	6SL32 0-0-YH38-U 0	6SL32 0-0-YH38-A 0	
55	60	62	62	60	FSE	6SL32 0-0-YH40-U 0	6SL32 0-0-YH40-A 0	
75	75	80	80	80	FSF	6SL32 0-0-YH42-U 0	6SL32 0-0-YH42-C 0	—
90	100	100	100	99	FSF	6SL32 0-0-YH44-U 0	6SL32 0-0-YH44-C 0	—
110	125	125	125	124	FSF	6SL32 0-0-YH46-U 0	6SL32 0-0-YH46-C 0	—
132	150	144	144	141	FSF	6SL32 0-0-YH48-U 0	6SL32 0-0-YH48-C 0	—
160	150	171	171	175	FSG ⁴⁾	—	6SL32 0-0-YH50-C 0	—
200	200	208	208	210	FSG ⁴⁾	—	6SL32 0-0-YH52-C 0	—
250	250	250	250	255	FSG ⁴⁾	—	6SL32 0-0-YH54-C 0	—
315	350	330	345	383	FSH	—	6SL32 2 0-YH56-0 C F 0	6SL3760-0MS00-0AA0
355	400	385	388	416	FSH	—	6SL32 2 0-YH58-0 C F 0	
400	450	420	432	471	FSH	—	6SL32 2 0-YH60-0 C F 0	
450	500	470	487	537	FSH	—	6SL32 2 0-YH62-0 C F 0	
500	500	520	546	596	FSJ	—	6SL32 2 0-YH64-0 C F 0	
560	600	580	610	679	FSJ	—	6SL32 2 0-YH66-0 C F 0	
630	700	650	679	753	FSJ	—	6SL32 2 0-YH68-0 C F 0	

Article No. supplements

Environmental class/harmful chemical substances acc. to EN 60721-3-3

Class 3C2

Class 3C3 (available soon)

Operator Panel

Without Operator Panel

With BOP-2 Basic Operator Panel (numeric 2-line display)

With IOP-2 Intelligent Operator Panel (graphic color display)

Extension with SINAMICS G120X I/O Extension Module (available soon)

Without extension

Line filter

Without integrated line filter

With integrated line filter Category C2

With integrated line filter Category C3

Communication

(variants for PROFIBUS DP or USS, Modbus RTU, BACnet MS/TP available soon)

PROFINET, EtherNet/IP

- ¹⁾ Rated power based on the base-load current I_L . The base-load current I_L is based on the duty cycle for low overload (LO).
- ²⁾ The base-load current I_L is based on the duty cycle for low overload (LO). These current values are valid for 690 V or 600 V and are specified on the rating plate of the converter.
- ³⁾ The input current depends on the motor load and line impedance. The input currents apply for a load at rated power (based on I_L) for a line impedance corresponding to $u_K = 1\%$. The current values are specified on the rating plate of the converter.

- ⁴⁾ The 690 V versions of frame size FSG are only available with an integrated line filter Category C3. To operate the converters also within TN systems with grounded outer conductor, you must remove the grounding screw.
- ⁵⁾ The Short Circuit Current Rating (SCCR) according to UL for industrial control panel installations to NEC Article 409 or UL 508A/508C or UL 61800-5-1 is 100 kA for SINAMICS G120X.

Clicking to the Industry Mall

6SL3255-0AA00-5AA0



Order overview

SINAMICS G120X infrastructure converters for HVAC/Water/Wastewater

Line-side components (continued)						Load-side power components		
Line filters (continued) Category C1	Line reactors	Recommended line-side overcurrent protection devices				Output reactors	Sine-wave filters	dv/dt filters plus VPL
	For frame sizes FSH and FSJ mandatory when using an external line filter Category C2	Fuses IEC-compliant		Fuses UL/cUL-compliant Rated voltage 600 V AC ⁵⁾				
Article No.	Article No.	Current A	Article No.	Fuse type Class/ Article No.	Current A	Article No.	Article No.	Article No.
–	A DC link reactor is integrated for frame sizes FSA to FSG – therefore no line reactor is required.	20	3NA3807-6	J	20	Available soon	–	Available soon
–		20	3NA3807-6	J	20	–	–	–
–		20	3NA3807-6	J	20	–	–	–
–		20	3NA3807-6	J	20	–	–	–
–		20	3NA3807-6	J	20	–	–	–
–		25	3NA3810-6	J	25	–	–	–
–		32	3NA3812-6	J	30	–	–	–
–		40	3NA3817-6KJ	J	35	–	–	–
–		50	3NA3820-6KJ	J	50	–	–	–
–		63	3NA3822-6	J	60	–	–	–
–		80	3NA3824-6	J	80	–	–	–
–		80	3NA3824-6	J	80	–	–	–
–		100	3NA3830-6	J	110	–	–	–
–		125	3NA3132-6	J	150	–	–	–
–		160	3NA3136-6	J	150	–	–	–
–		200	3NA3140-6	J	200	–	–	–
–		250	3NE1227-0		250	–	–	–
–		315	3NE1230-0		315	–	–	–
–		355	3NE1331-0		355	–	–	–
–	6SL3000-0CH34-8AA0	450	3NE1333-2		450	6SL3000-2AH34-7AA0	–	6SL3000-2DH35-8AA0
–		500	3NE1334-2		500		–	
–		560	3NE1435-2		560	6SL3000-2AH35-8AA0	–	
–	6SL3000-0CH36-0AA0	630	3NE1436-2		630	6SL3000-2AH38-1AA0	–	6SL3000-2DH38-1AA0
–		710	3NE1437-2		710		–	
–	6SL3000-0CH38-4AA0	800	3NE1438-2		800		–	
–		850	3NE1448-2		850		–	

Order overview

SINAMICS G120X infrastructure converters for HVAC/Water/Wastewater

Clicking to the Industry Mall

6SL3255-0AA00-5AA0



Selection and ordering data (continued)

Supplementary system components for SINAMICS G120X

Description	Article No.
IOP-2 Intelligent Operator Panel Operating languages: English, German, French, Italian, Spanish, Portuguese, Dutch, Swedish, Finnish, Russian, Czech, Polish, Turkish, Chinese Simplified	6SL3255-0AA00-4JA2
IOP-2 Handheld	6SL3255-0AA00-4HA1
BOP-2 Basic Operator Panel	6SL3255-0AA00-4CA1
Door mounting kit for IOP-2/BOP-2	6SL3256-0AP00-0JA0
SINAMICS SD card 512 MB, empty	6SL3054-4AG00-2AA0
SINAMICS G120 Smart Access for wireless commissioning, operation and diagnostics of the following converters using a smartphone, tablet or laptop	6SL3255-0AA00-5AA0
SINAMICS G120X I/O Extension Module (available soon)	6SL3255-0BE00-0AA0
Shield connection kits for Power Module for SINAMICS G120X • Frame sizes FSA to FSG • Frame sizes FSH to FSJ	Included in the scope of delivery of the converters, can be ordered as spare part Please observe the notes included in the operating instructions
Push-through mounting frames (available soon) for SINAMICS G120X degree of protection IP20/UL Open Type • Frame size FSA • Frame size FSB • Frame size FSC • Frame size FSD • Frame size FSE • Frame size FSF • Frame size FSG	6SL3261-6GA00-0BA0 6SL3261-6GB00-0BA0 6SL3261-6GC00-0BA0 6SL3261-6GD00-0BA0 6SL3261-6GE00-0BA0 6SL3261-6GF00-0BA0 6SL3261-6GG00-0BA0
Installation handles (available soon) for SINAMICS G120X • Frame sizes FSD to FSF	6SL3200-0SM22-0AA0
IP21 top covers (available soon) for SINAMICS G120X degree of protection IP20/UL Open Type • Frame size FSA • Frame size FSB • Frame sizes FSC and FSD • Frame size FSE • Frame sizes FSF and FSG	6SL3266-1PA00-0BA0 6SL3266-1PB00-0BA0 6SL3266-1PD00-0BA0 6SL3266-1PE00-0BA0 6SL3266-1PF00-0BA0
Installation kit for line-side cable connection, left (available soon) for SINAMICS G120X • Frame size FSH	6SL3366-1LH00-0PA0
SINAMICS G120X Starter Kit (available soon) • Converter 380 ... 480 V 3 AC, PROFINET, FSA, 0.75 kW • IOP-2 • SINAMICS G120 Smart Access	6SL3200-0AE70-0AA0
SINAMICS G120X training case (available soon)	6AG1067-2AA00-0AC1

Spare parts for SINAMICS G120X

Description	Article No.
FPI board (freely-programmable interface board) (available soon) for SINAMICS G120X • Frame sizes FSH and FSJ	Available soon
PSB board (power supply board) (available soon) for SINAMICS G120X • Frame sizes FSH and FSJ	Available soon
Current transformers (available soon) for SINAMICS G120X • 2000 A for frame sizes FSH and FSJ • 1000 A for frame size FSJ	6SL3200-0SE01-0AA0 6SL3200-0SE02-0AA0
Spare parts kit for Control Unit (available soon) for SINAMICS G120X • Frame sizes FSA to FSJ	6SL3200-0SK10-0AA0
Shield connection kit for Control Unit (available soon) for SINAMICS G120X • Frame sizes FSD to FSG	6SL3264-1EA00-0YA0
Shield connection kits for Power Module for SINAMICS G120X degree of protection IP20/UL Open Type • Frame size FSA (available soon) • Frame size FSB (available soon) • Frame size FSC (available soon) • Frame size FSD • Frame size FSE • Frame size FSF • Frame size FSG	6SL3262-1AA01-0DA0 6SL3262-1AB01-0DA0 6SL3262-1AC01-0DA0 6SL3262-1AD01-0DA0 6SL3262-1AE01-0DA0 6SL3262-1AF01-0DA0 6SL3262-1AG01-0DA0
Mounting set for SINAMICS G120X • Frame sizes FSD to FSG	6SL3200-0SK08-0AA0
Terminal cover kits for SINAMICS G120X • Frame size FSD • Frame size FSE • Frame size FSF • Frame size FSG	6SL3200-0SM13-0AA0 6SL3200-0SM14-0AA0 6SL3200-0SM15-0AA0 6SL3200-0SM16-0AA0
External fan units for SINAMICS G120X degree of protection IP20/UL Open Type • Frame size FSA (available soon) • Frame size FSB (available soon) • Frame size FSC (available soon) • Frame size FSD • Frame size FSE • Frame size FSF • Frame size FSG • Frame sizes FSH and FSJ	6SL3200-0SF52-0AA0 6SL3200-0SF53-0AA0 6SL3200-0SF54-0AA0 6SL3200-0SF15-0AA0 6SL3200-0SF16-0AA0 6SL3200-0SF17-0AA0 6SL3200-0SF18-0AA0 6SL3300-0SF01-0AA0
Internal fan unit (available soon) for SINAMICS G120X degree of protection IP20/UL Open Type • Frame sizes FSH and FSJ	6SL3200-0SF50-0AA0

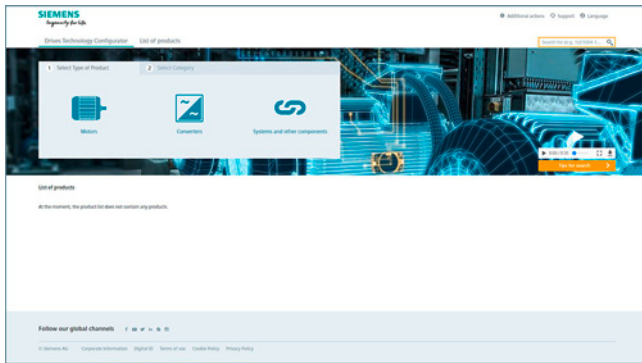
Compact Installation Instructions are supplied in hard copy form in German and English with every SINAMICS G120X.

Further technical specifications and documentation are available on the Internet at: www.siemens.com/sinamics-g120x/documentation and via the Drive Technology Configurator (DT Configurator) in the Siemens Industry Mall: www.siemens.com/dt-configurator

Overview

The Drive Technology Configurator (DT Configurator) helps you to configure the optimum drive technology products for your application – starting with gear units, motors, converters as well as the associated options and components and ending with controllers, software licenses and connection systems. Whether with little or detailed knowledge of products: preselected product groups, deliberate navigation through selection menus and direct product selection through entry of the article number support quick, efficient and convenient configuration.

In addition, comprehensive documentation comprising technical data sheets, 2D dimensional drawings/3D CAD models, operating instructions, certificates, etc. can be selected in the DT Configurator. Immediate ordering is possible by simply transferring a parts list to the shopping cart of the Industry Mall.



Drive Technology Configurator for efficient drive configuration with the following functions

- Quick and easy configuration of drive products and associated components – gear units, motors, converters, controllers, connection systems
- Configuration of drive systems for pumps, fans and compressor applications from 1 kW to 2.6 MW
- Retrievable documentation for configured products and components, such as
 - Data sheets in up to 9 languages in PDF or RTF format
 - 2D dimensional drawings/3D CAD models in various formats
 - Terminal box drawing and terminal connection diagram
 - Operating instructions
 - Certificates
 - Start-up calculation for SIMOTICS motors
 - EPLAN macros
- Support with retrofitting in conjunction with Spares On Web (www.siemens.com/sow)
- Ability to order products directly through the Siemens Industry Mall

Access to the Drive Technology Configurator

The Drive Technology Configurator can be called up without registration and without a login:
www.siemens.com/dt-configurator

Selection and ordering data

Description	Article No.
Interactive Catalog CA 01 including Drive Technology Configurator	
• German (DVD-ROM – Edition Germany)	E86060-D4001-A500-D9
• German, English, French, Spanish (Download – without prices)	E86060-D4001-A510-D8-7500

More information

Online access to the Drive Technology Configurator

More information about the Drive Technology Configurator is available on the Internet at
www.siemens.com/dtconfigurator

Offline access to the Drive Technology Configurator in the Interactive Catalog CA 01

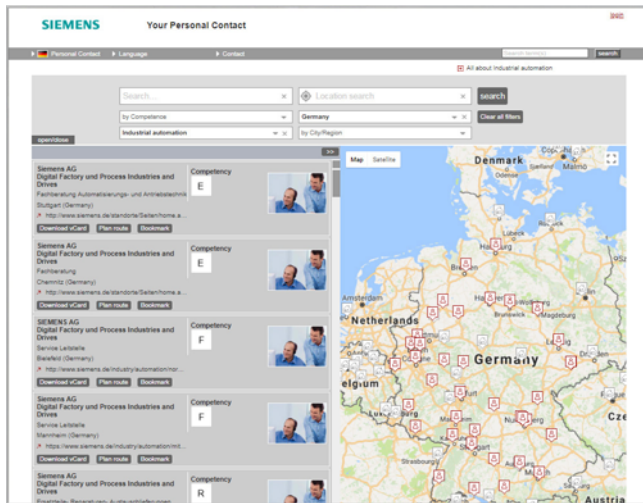
In addition, the Drive Technology Configurator is also included in the Interactive Catalog CA 01 – the offline version of the Siemens Industry Mall.

The Interactive Catalog CA 01 can be ordered from the relevant Siemens sales office or via the Internet:
www.siemens.com/automation/CA01

Order overview

Partner · Industry Mall and Interactive Catalog CA 01

Partner at Siemens



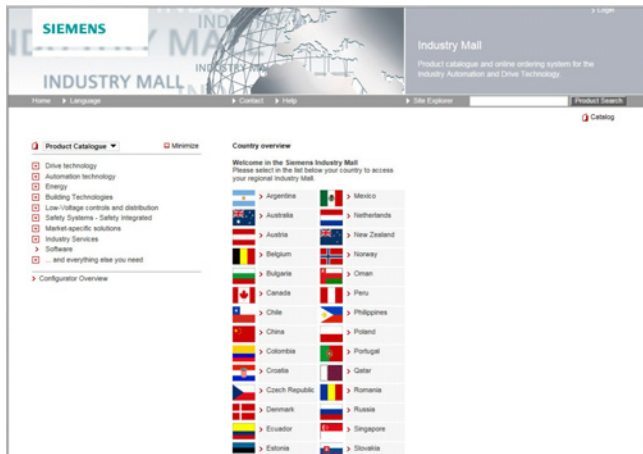
At your service locally, around the globe for consulting, sales, training, service, support, spare parts on the entire portfolio of Digital Factory and Process Industries and Drives.

Your partner can be found in our Personal Contacts Database at: www.siemens.com/automation-contact

You start by selecting

- the required competence,
 - products and branches,
 - a country and a city
- or by a
- location search or free text search.

Easy product selection and ordering in the Industry Mall and with the Interactive Catalog CA 01



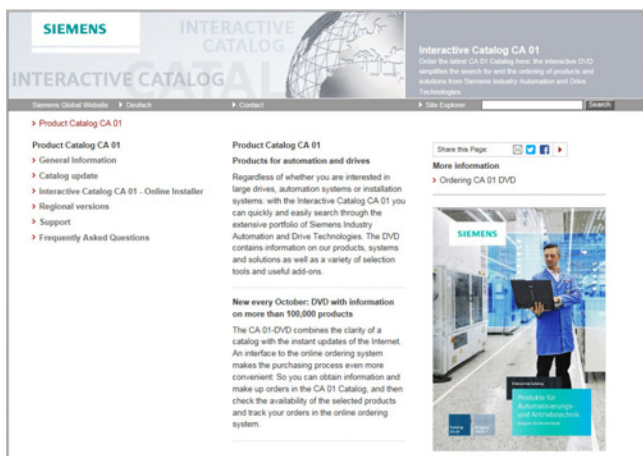
Industry Mall

The Industry Mall is a Siemens Internet ordering platform. Here you have a clear and informative online access to a huge range of products.

Powerful search functions make it easy to select the required products. Configurators enable you to configure complex product and system components quickly and easily. CAx data types are also provided here.

Data transfer allows the whole procedure, from selection through ordering to tracking and tracing, to be carried out online. Availability checks, customer-specific discounts and bid creation are also possible.

www.siemens.com/industrymall

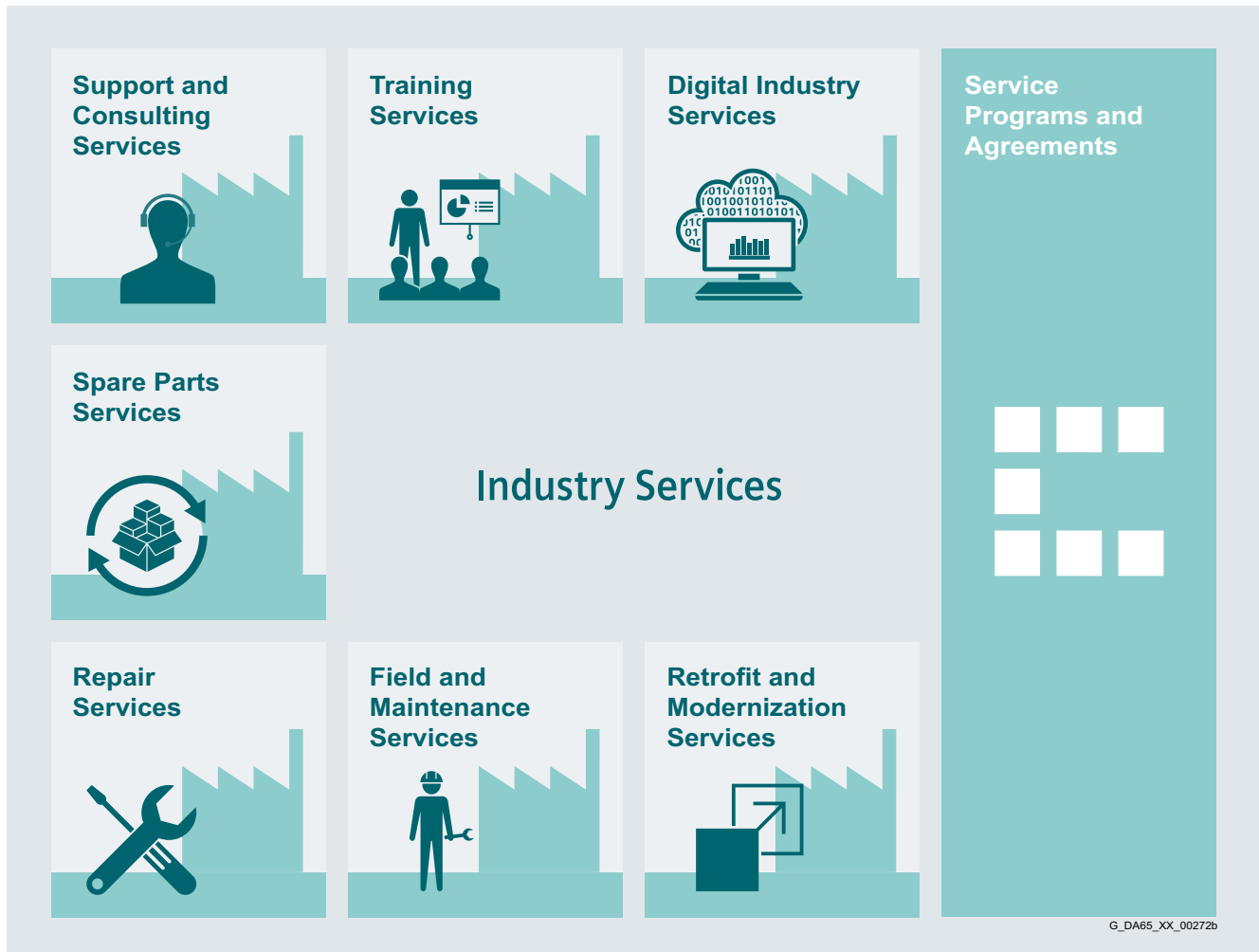


Interactive Catalog CA 01 - Products for Automation and Drives

The Interactive Catalog CA 01 combined with the Siemens Industry Mall unites the benefits of offline and online media in one application – the performance of an offline catalog with the availability of manifold and up-to-date information on the Internet.

Select products and assemble orders with the CA 01, determine the availability of the selected products and track & trace via the Industry Mall.

More information and download: www.siemens.com/automation/ca01

Overview

Keep your business running and shaping your digital future – with Industry Services

Optimizing the productivity of your equipment and operations can be a challenge, especially with constantly changing market conditions. Working with our service experts makes it easier. We understand your industry's unique processes and provide the services needed so that you can better achieve your business goals.

You can count on us to maximize your uptime and minimize your downtime, increasing your operations' productivity and reliability. When your operations have to be changed quickly to meet a new demand or business opportunity, our services give you the flexibility to adapt. Of course, we take care that your production is protected against cyber threats. We assist in keeping your operations as energy and resource efficient as possible and reducing your total cost of ownership. As a trendsetter, we ensure that you can capitalize on the opportunities of digitalization and by applying data analytics to enhance decision making: You can be sure that your plant reaches its full potential and retains this over the longer lifespan.

You can rely on our highly dedicated team of engineers, technicians and specialists to deliver the services you need – safely, professionally and in compliance with all regulations. We are there for you, where you need us, when you need us.

www.siemens.com/industrieservices

Order overview

Industry Services

Industry Services – Portfolio overview

Overview

Digital Industry Services



Digital Industry Services

Digital Industry Services make your industrial processes transparent to gain improvements in productivity, asset availability, and energy efficiency.

Production data is generated, filtered and translated with intelligent analytics to enhance decision-making.

This is done whilst taking data security into consideration and with continuous protection against cyber-attack threats.

<https://www.siemens.com/global/en/home/products/services/industry/digital-services.html>

Training Services



Training Services

From the basics and advanced to specialist skills, SITRAIN courses provide expertise right from the manufacturer – and encompass the entire spectrum of Siemens products and systems for the industry.

Worldwide, SITRAIN courses are available wherever you need a training course in more than 170 locations in over 60 countries.

<https://support.industry.siemens.com/cs/ww/en/sc/2226>

Support and Consulting Services



Support and Consulting Services

Industry Online Support site for comprehensive information, application examples, FAQs and support requests.

Technical and Engineering Support for advice and answers for all inquiries about functionality, handling, and fault clearance. The Service Card as prepaid support for value added services such as Priority Call Back or Extended Support offers the clear advantage of quick and easy purchasing.

Information & Consulting Services, e.g. SIMATIC System Audit; clarity about the state and service capability of your automation system or Lifecycle Information Services; transparency on the lifecycle of the products in your plants.

<https://support.industry.siemens.com/cs/ww/en/sc/2235>

Spare Parts Services



Spare Parts

Spare Parts Services are available worldwide for smooth and fast supply of spare parts – and thus optimal plant availability. Genuine spare parts are available for up to ten years. Logistic experts take care of procurement, transport, custom clearance, storage and order management.

Reliable logistics processes ensure that components reach their destination as needed.

Since not all spare parts can be kept in stock at all times, Siemens offers a preventive measure for spare parts provisioning on the customer's premises with optimized **Spare Parts Packages** for individual products, custom-assembled drive components and entire integrated drive trains – including risk consulting.

Asset Optimization Services help you design a strategy for parts supply where your investment and carrying costs are reduced and the risk of obsolescence is avoided.

<https://support.industry.siemens.com/cs/ww/en/sc/2110>

Repair Services



Repair Services

Repair Services are offered on-site and in regional repair centers for fast restoration of faulty devices' functionality.

Also available are extended repair services, which include additional diagnostic and repair measures, as well as emergency services.

<https://support.industry.siemens.com/cs/ww/en/sc/2154>

Field and Maintenance Services



Field and Maintenance Services

Siemens specialists are available globally to provide expert field and maintenance services, including commissioning, functional testing, preventive maintenance and fault clearance.

All services can be included in customized service agreements with defined reaction times or fixed maintenance intervals.

<https://support.industry.siemens.com/cs/ww/en/sc/2265>

Retrofit and Modernization Services



Retrofit and Modernization Services

Provide a cost-effective solution for the expansion of entire plants, optimization of systems or upgrading existing products to the latest technology and software, e.g. migration services for automation systems.

Service experts support projects from planning through commissioning and, if desired over the entire extended lifespan, e.g. Retrofit for Integrated Drive Systems for an extended lifetime of your machines and plants.

<https://support.industry.siemens.com/cs/ww/en/sc/2286>

Service Programs and Agreements



Service Programs and Agreements

A technical Service Program or Agreement enables you to easily bundle a wide range of services into a single annual or multi-year agreement.

You pick the services you need to match your unique requirements or fill gaps in your organization's maintenance capabilities.

Programs and agreements can be customized as KPI-based and/or performance-based contracts.

<https://support.industry.siemens.com/cs/ww/en/sc/2275>

Overview

Online Support – fast, intuitive, whenever you want, wherever you need



Web
support.industry.siemens.com

App

Google Play App Store Microsoft

Scan the QR code for information on our Online Support app.

FAQ / Application examples
Information about industrial products, programming and configuration as well as application examples

Technical Information
Videos, documentation, manuals, updates, product notes, compatibility tool, certificates, planning data such as dimensional drawings, product data, 3D models

Forum
Exchange information and experience with other users and experts

Online Support for Siemens Products for Industry

Siemens Industry and Online Support with some 1.7 million visitors per month is one of the most popular web services provided by Siemens. It is the central access point for comprehensive technical know-how about products, systems and services for automation and drives applications as well as for process industries.

In connection with the challenges and opportunities related to digitalization you can look forward to continued support with innovative offerings.

Order overview

Conditions of sale and delivery

1. General Provisions

By using this catalog you can acquire hardware and software products described therein from Siemens AG subject to the following Terms and Conditions of Sale and Delivery (hereinafter referred to as "T&C"). Please note that the scope, the quality and the conditions for supplies and services, including software products, by any Siemens entity having a registered office outside Germany, shall be subject exclusively to the General Terms and Conditions of the respective Siemens entity. The following T&C apply exclusively for orders placed with Siemens Aktiengesellschaft, Germany.

1.1 For customers with a seat or registered office in Germany

For customers with a seat or registered office in Germany, the following applies subordinate to the T&C:

- for installation work the "General Conditions for Erection Works – Germany"¹⁾ ("Allgemeine Montagebedingungen – Deutschland" (only available in German at the moment)) and/or
- for Plant Analytics Services the "Standard Terms and Conditions for Plant Analytics Services – for Customer in Germany"¹⁾ ("Allgemeine Geschäftsbedingungen für das Plant Analytics Services – für Kunden in Deutschland" (only available in German at the moment)) and/or
- for stand-alone software products and software products forming a part of a product or project, the "General License Conditions for Software Products for Automation and Drives for Customers with a Seat or registered Office in Germany"¹⁾ and/or
- for other supplies and/or services the "General Conditions for the Supply of Products and Services of the Electrical and Electronics Industry"¹⁾.
In case such supplies and/or services should contain Open Source Software, the conditions of which shall prevail over the "General Conditions for the Supply of Products and Services of the Electrical and Electronics Industry"¹⁾. A notice will be contained in the scope of delivery in which the applicable conditions for Open Source Software are specified. This shall apply mutatis mutandis for notices referring to other third party software components.

1.2 For customers with a seat or registered office outside Germany

For customers with a seat or registered office outside Germany, the following applies subordinate to the T&C:

- for Plant Analytics Services the "Standard Terms and Conditions for Plant Analytics Services"¹⁾ and/or
- for services the "International Terms & Conditions for Services"¹⁾ supplemented by "Software Licensing Conditions"¹⁾ and/or
- for other supplies of hard- and/or software the "International Terms & Conditions for Products"¹⁾ supplemented by "Software Licensing Conditions"¹⁾.

1.3 For customers with master or framework agreement

To the extent our supplies and/or services offered are covered by an existing master or framework agreement, the terms and conditions of that agreement shall apply instead of T&C.

2. Prices

The prices are in € (Euro) ex point of delivery, exclusive of packaging.

The sales tax (value added tax) is not included in the prices. It shall be charged separately at the respective rate according to the applicable statutory legal regulations.

Prices are subject to change without prior notice. We will charge the prices valid at the time of delivery.

To compensate for variations in the price of raw materials (e.g. silver, copper, aluminum, lead, gold, dysprosium and neodym), surcharges are calculated on a daily basis using the so-called metal factor for products containing these raw materials. A surcharge for the respective raw material is calculated as a supplement to the price of a product if the basic official price of the raw material in question is exceeded.

The metal factor of a product indicates the basic official price (for those raw materials concerned) as of which the surcharges on the price of the product are applied, and with what method of calculation.

You will find a detailed explanation of the metal factor on the page headed "Metal surcharges" – see catalog D 31.5.

To calculate the surcharge (except in the cases of dysprosium and neodym), the official price from the day prior to that on which the order was received or the release order was effected is used.

3. Additional Terms and Conditions

The dimensions are in mm. In Germany, according to the German law on units in measuring technology, data in inches apply only to devices for export.

Illustrations are not binding.

Insofar as there are no remarks on the individual pages of this catalog – especially with regard to data, dimensions and weights given – these are subject to change without prior notice.

¹⁾ The text of the Terms and Conditions of Siemens AG can be downloaded at
www.siemens.com/automation/salesmaterial-as/catalog/en/terms_of_trade_en.pdf

4. Export regulations

We shall not be obligated to fulfill any agreement if such fulfillment is prevented by any impediments arising out of national or international foreign trade or customs requirements or any embargoes and/or other sanctions.

Export may be subject to license. We shall indicate in the delivery details whether licenses are required under German, European and US export lists.

Our products are controlled by the U.S. Government (when labeled with "ECCN" unequal "N") and authorized for export only to the country of ultimate destination for use by the ultimate consignee or end-user(s) herein identified. They may not be resold, transferred, or otherwise disposed of, to any other country or to any person other than the authorized ultimate consignee or end-user(s), either in their original form or after being incorporated into other items, without first obtaining approval from the U.S. Government or as otherwise authorized by U.S. law and regulations.

The export indications can be viewed in advance in the description of the respective goods on the Industry Mall, our online catalog system. Only the export labels "AL" and "ECCN" indicated on order confirmations, delivery notes and invoices are authoritative.

Products labeled with "AL" unequal "N" are subject to European / national export authorization. Products without label, with label "AL:N" / "ECCN:N", or label "AL:9X9999" / "ECCN: 9X9999" may require authorization from responsible authorities depending on the final end-use, or the destination.

If you transfer goods (hardware and/or software and/or technology as well as corresponding documentation, regardless of the mode of provision) delivered by us or works and services (including all kinds of technical support) performed by us to a third party worldwide, you must comply with all applicable national and international (re-)export control regulations.

If required for the purpose of conducting export control checks, you (upon request by us) shall promptly provide us with all information pertaining to the particular end customer, final disposition and intended use of goods delivered by us respectively works and services provided by us, as well as to any export control restrictions existing in this relation.

The products listed in this catalog may be subject to European/German and/or US export regulations. Any export requiring approval is therefore subject to authorization by the relevant authorities.

Get more information

SINAMICS G120X infrastructure converters
for HVAC/Water/Wastewater:
www.siemens.com/sinamics-g120x

Catalog D 31.5 (available soon):
www.siemens.com/d31-5

SIMOTICS electric motors:
www.siemens.com/simotics

Motion Control Systems and Solutions for production
machine and machine tool equipment:
www.siemens.com/motioncontrol

Local partners worldwide:
www.siemens.com/automation-contact

Siemens AG
Digital Factory Division
Motion Control
Postfach 31 80
91050 ERLANGEN
GERMANY

© Siemens AG 2018
Subject to change without prior notice
(Article No. E86060-E5531-A151-A1-7600)
V6.MKKATA.GMC.106
KG 1218 14 En
Produced in Germany

The information provided in this catalog contains merely general descriptions or characteristics of performance which in case of actual use do not always apply as described or which may change as a result of further development of the products. An obligation to provide the respective characteristics shall only exist if expressly agreed in the terms of contract. Availability and technical specifications are subject to change without notice.

All product designations may be trademarks or product names of Siemens AG or supplier companies whose use by third parties for their own purposes could violate the rights of the owners.

Security information

Siemens provides products and solutions with industrial security functions that support the secure operation of plants, systems, machines and networks.

In order to protect plants, systems, machines and networks against cyber threats, it is necessary to implement – and continuously maintain – a holistic, state-of-the-art industrial security concept. Siemens' products and solutions constitute one element of such a concept.

Customers are responsible for preventing unauthorized access to their plants, systems, machines and networks. Such systems, machines and components should only be connected to an enterprise network or the internet if and to the extent such a connection is necessary and only when appropriate security measures (e.g. firewalls and/or network segmentation) are in place.

For additional information on industrial security measures that may be implemented, please visit
<https://www.siemens.com/industrialsecurity>

Siemens' products and solutions undergo continuous development to make them more secure. Siemens strongly recommends that product updates are applied as soon as they are available and that the latest product versions are used. Use of product versions that are no longer supported, and failure to apply the latest updates may increase customer's exposure to cyber threats.

To stay informed about product updates, subscribe to the Siemens Industrial Security RSS Feed under
<https://www.siemens.com/industrialsecurity>

Discover the
advantages of
Integrated Drive
Systems at a glance

