

Datasheet - AZ 15/16-B1-1747

Safety switch with separate actuator / AZ 15 / Actuator



- For play-free interlocking of light guards
- Suitable for retrofitting



(Minor differences between the printed image and the original product may exist!)

Ordering details

Product type description	AZ 15/16-B1-1747
Article number	101092711
EAN code	4030661104003

Global Properties

Product name	Gerader Betätiger B1-1747
Weight	16 g

Mechanical data

Design of actuators	straight, rigid
Minimum actuating radius	150 mm

notice

Minimum actuating radius on hinged guards 150 mm

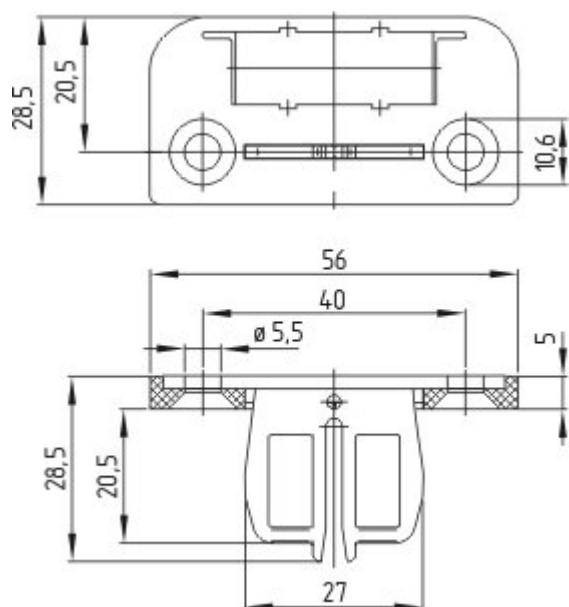
The axis of the hinge should be 5 mm above the top edge of the safety switch and in the same plane

Documents

Mounting and wiring instructions (de, en, fr, it, es, jp) 267 kB, 29.08.2006

Code: m_z15p02

Images



Dimensional drawing (miscellaneous)

K.A. Schmersal GmbH & Co. KG, Möddinghofe 30, D-42279 Wuppertal

The data and values have been checked thoroughly. Technical modifications and errors excepted.

Generiert am 31.05.2013 - 11:34:28h Kasbase 2.2.17.F DBI

Image

Image
et=sS