

Datasheet - AZ 15/16-B3-1747

Safety switch with separate actuator / AZ 15 / Actuator

☒ Preferred typ



(Minor differences between the printed image and the original product may exist!)

- For very small actuating radii at 90° to the plane of the actuator
- Suitable for retrofitting
- For play-free interlocking of light guards

Ordering details

Product type description	AZ 15/16-B3-1747
Article number	101096092
EAN code	4030661104140

Global Properties

Product name	Beweglicher Betätiger AZ 15/16-B3-1747
Weight	25 g

Mechanical data

Design of actuators	angled, flexible
Minimum actuating radius	32 mm

notice

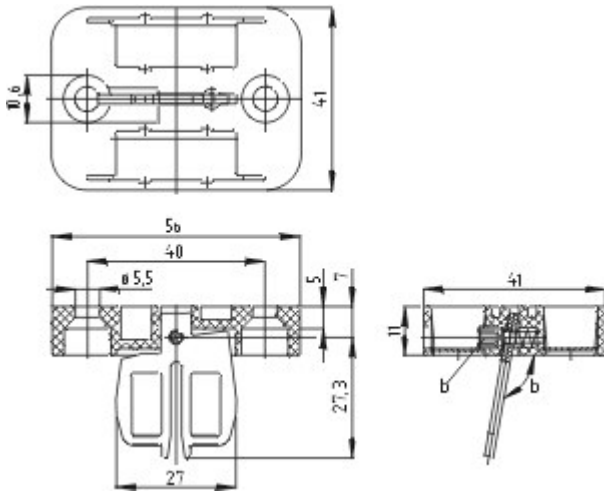
Actuating radius adjustable, minimum 32 mm, using an hexagonal key wrench 2,5 mm (b) A/F
The axis of the hinge should be 11 mm above the top edge of the safety switch and in the same plane

Documents

Mounting and wiring instructions (de, en, fr, it, es, jp) 267 kB, 29.08.2006

Code: m_z15p02

Images



Dimensional drawing (miscellaneous)

K.A. Schmersal GmbH & Co. KG, Möddinghofe 30, D-42279 Wuppertal
 The data and values have been checked thoroughly. Technical modifications and errors excepted.
 Generiert am 31.05.2013 - 11:37:41h Kasbase 2.2.17.F DBI

